



NORTHERN UTAH INTERAGENCY FIRE CENTER



INITIAL ATTACK RUN CARDS 2020

Northern Utah Interagency Run Cards, 2020

Effective June 1 through October 1.

Notifications will occur at any time of year.

The Interagency Run Cards are developed by a group of interagency representatives to provide guidance to the Northern Utah Interagency Fire Center (NUIFC) for initial attack dispatching of wildland fire suppression resources within a pre-identified geographic areas (run card zones).

The run cards are used when there is a new smoke reported and doesn't meet the discretionary smoke report criteria. **When a NWCG qualified Incident Commander is on scene of the fire, they may adjust the pre-established initial attack response as identified on the run card** by cancelling resources currently en-route (or about to be dispatched) or ordering additional resources.

Discretionary Smoke Reports:

If any of the following smoke reports are received, the appropriate Duty Officer will need to be contacted to determine the response.

During periods of large/multiple fire activity, when there are not enough resources to fill the run cards, the Duty Officers from FF&SL, USFS and BLM will be available to NUIFC to assist in initial attack incident prioritization.

- Federal Aviation Administration (FAA) Report
- Abandoned Campfires, when clearly stated that it is still within the ring
- Duty Officers may only make an adjustment to the Run Card after gathering Situational Awareness/Intelligence from current responding resources. This should be a rare augmentation to the pre-established Run Card response.

After Hours Dispatch Procedures:

BLM: After resource duty hours, dispatchers will contact the BLM Duty Officer who will determine the level of response for BLM fires. If unable to make contact with the Duty Officer, contact the FMO. Dispatchers are still responsible for making all notifications per the run card.

STATE: After resource duty hours, dispatchers will notify the State Area FMO and/or Duty Officers who will then determine the level of response for state and private fires. If unable to make contact with the Area FMO / Duty Officer, contact the State Duty Officer (Brett Ostler (385) 251-0144 or Wade Snyder 801-554-6121). Dispatchers are still responsible for making all notifications per the run card.

USFS: After resource duty hours, dispatchers will notify the appropriate USFS Zone Duty Officer who will determine the level of response for USFS fires. If unable to make contact with the Duty Officer, contact the Forest DO. Dispatchers are still responsible for making all notifications per the Run Card.

Dispatch: The on-call dispatcher should not make notifications based on the run cards to the DO's between the hours of 2200 and 0600 if there are only local government resources on-scene and the IC identifies that no additional resources are needed to suppress the fire. The DO's will be notified the following business day once there a field fire report has been provided to NUIFC and jurisdiction has been determined. If there are federal resources responding, additional resources being requested, or there needs to be a suppression decision made by a DO, the on-call dispatcher will call the appropriate DO to make notifications or get additional suppression direction. The on-call dispatcher will contact the DO anytime there needs to be a decision made regardless of the time of day.

Notes:

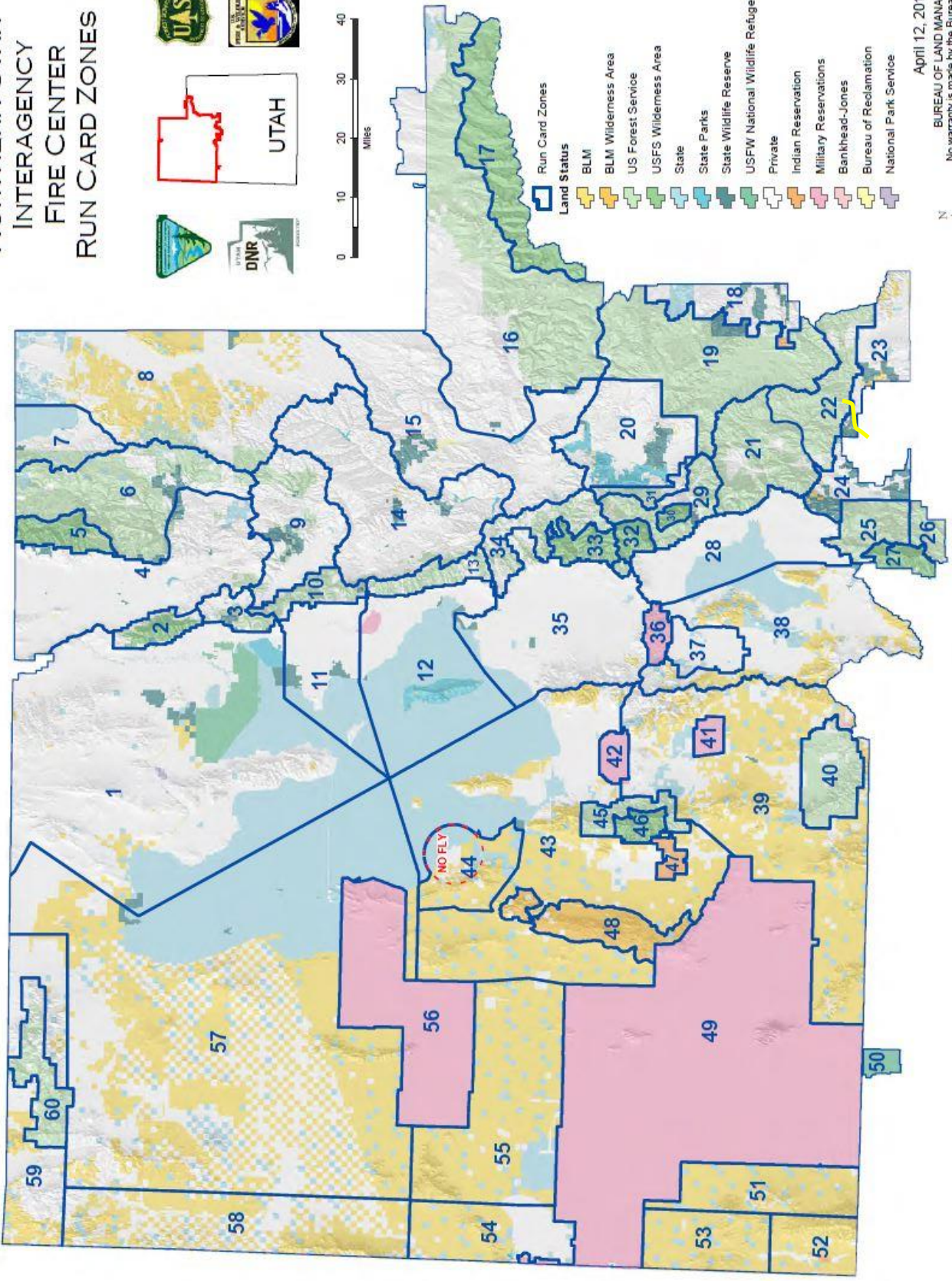
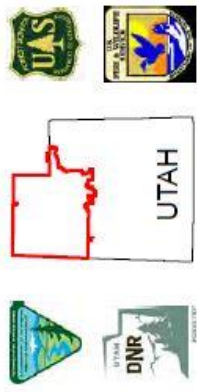
- Volunteer and city fire departments (or any other resource not dispatched by NUIFC) will not be considered as meeting the run card requirements for numbers of resources during the initial attack dispatch.
- The Northern Utah Interagency Multi-Agency Coordinating (MAC) group will convene and prioritize extended attack fires or as warranted during elevated times of fire activity or limited resource availability for dispatches.
- If resources are dispatched away from their zone, then the duty officer responsible for that resource needs to be notified.

- **Default Initial Response Color Coding for USFS:**
 - **Red** = Suppress
 - **Green** = Gather Intel, relay to dispatch, get further direction from FS D.O. and A.A.

Maps can be located at:

https://ftp.nifc.gov/public/base_info/retardant_avoidance_areas/Maps/Region_4/Uinta_Wasatch_Cache/

NORTHERN UTAH INTERAGENCY FIRE CENTER RUN CARD ZONES



- Run Card Zones**
- BLM
 - BLM Wilderness Area
 - US Forest Service
 - USFS Wilderness Area
 - State
 - State Parks
 - State Wildlife Reserve
 - USFW National Wildlife Refuge
 - Private
 - Indian Reservation
 - Military Reservations
 - Bankhead-Jones
 - Bureau of Reclamation
 - National Park Service

APRIL 12, 2019
 BUREAU OF LAND MANAGEMENT
 No warranty is made by the Bureau of Land Management as to the accuracy, reliability, or completeness of these data for individual use or aggregate use with other data.

Fire Management Officer Group (FMOG) Approval

2020 Runcards approved by the Northern Utah Interagency Fire Center FMOG.

Bureau of Land Management

VACANT- FMO

Date

State of Utah Forestry Fire and State Lands

Dave Vickers- FMO

Date

U.S. Forest Service

Brook Chadwick- FMO

Date

U.S Fish and Wildlife Service

Tracy Swenson- FMO

Date

National Park Service

Greg Barton- FMO

Date

ZONE 1

**Box Elder County (Bear River Valley to Plymouth to Promontory)
FDRA: 478 (Desert)**

Follow these procedures in the order listed

PROCEDURES	<p>Dispatch closest forces based on current dispatch level - See table below for number and type of resources to be dispatched.</p> <p><i>If report meets discretionary criteria call appropriate Duty Officer to determine response (Reference p.1)</i></p> <p>Suggested closest resources (these are only suggestions to help the dispatcher get started): Box Elder County Fire Warden (dispatched through Box Elder County Dispatch) FS Engine (South Weber) FWS Engine (Brigham City) FS Engine (Logan)</p> <p>**Caribou-Targhee National Forest administers FS lands South of the Utah/Idaho Stateline NE of Plymouth and NW of Clarkston</p> <p>If aircraft is dispatched: Consider/Initiate a TFR</p> <p>*If fire is on state, county or private lands the use of additional aviation resources will be authorized by: State Bear River Area Duty Officer and/or Fire Warden</p> <p>Primary notifications: State Bear River Area Duty Officer Box Elder County Dispatch (435) 732-6890 Box Elder County Warden Bear River Bird Refuge FMO (Tracy Swenson (435) 734-6449, if near Refuge boundary)</p> <p>Other notifications (as warranted): BLM Duty Officer Bear River Bird Refuge Manager (Erin Holmes (435) 734-6451) FS North Zone Duty Officer Golden Spike NHS (Leslie Crossland (435) 471-2209 EXT 24, if near park boundary) Park Service FMO (Call Greg Bartin (435) 668-9625, if near park boundary) Tooele County Dispatch 435-882-5600 (if on Promontory Mtn.) If on or near Caribou-Targhee National Forest or the Idaho state line notify Eastern Idaho Interagency Fire Center FS Patrol Captain Marty Budzynski (435) 671-1694 or acting, if a threat to FS land</p>
-------------------	--

DISPATCH LEVEL	LOW	MODERATE	HIGH
RESOURCES (Minimum)	• 1 Engine	• 2 Engines • 1 Water Tender	• 3 Engines • 1 Water Tender • ATGS

Primary Initial Attack Frequencies				
Frequency Type	Frequency Name	Receive	Transmit	Tone
**If near the Idaho border, consider using TAC 2 or 3 to assist with frequency management.				
Command 1	BLM Hansel	170.5125	163.0250	123.0
Command 2	FS Little Mtn	169.9500	164.1250	123.0
Command 3	FS Mt Ogden	169.9500	164.1250	110.9
Command 3	BLM Francis	173.6750	164.7750	167.9

ZONE 2

**Box Elder & Cache Counties (Wellsville Wilderness Area – Logan Ranger District)
FDRA: 479 (Wasatch)**

Follow these procedures in the order listed

PROCEDURES	<p>Dispatch closest forces based on current dispatch level - See table below for number and type of resources to be dispatched.</p> <p><i>If report meets discretionary criteria call appropriate Duty Officer to determine response (Reference p.1)</i></p> <p>Suggested closest resources (these are only suggestions to help the dispatcher get started): FS Helicopter (Mt. Green) FS Engine (Logan) FS Engine (South Weber) FWS Engine (Brigham City)</p> <p>FS Ownership, verify default initial response on Red/Green map. Ensure Duty Officer and IC informed.</p> <p>**If fire is on or adjacent to a wilderness area, notify the FS North Zone Duty Officer.</p> <p>If aircraft is dispatched: Consider/Initiate a TFR If in USFS wilderness, helicopter recon only</p> <p>Primary notifications: FS North Zone Duty Officer State Bear River Area Duty Officer Box Elder County Dispatch (435) 732-6890 Cache County Dispatch (435) 753-7555 Cache County Warden FS Patrol Captain Marty Budzynski (435) 671-1694 or acting, if a threat to FS land</p> <p>Other notifications (as warranted): Box Elder County Warden</p>
-------------------	--

DISPATCH LEVEL	LOW	MODERATE	HIGH
RESOURCES (Minimum)	<ul style="list-style-type: none"> •Contact Duty Officer 	<ul style="list-style-type: none"> •1 Resource- Engine or IA Squad 	<ul style="list-style-type: none"> •2 Resources- Engines or IA Squads •1 Helicopter (recon only)

Primary Initial Attack Frequencies				
Frequency Type	Frequency Name	Receive	Transmit	Tone
Command 1	FS Mt. Ogden	169.9500	164.1250	110.9 (Box Elder)
Command 2	FS Little Mtn.	169.9500	164.1250	123.0
Command 3	FS Logan Peak	169.9500	164.1250	146.2 (Cache)
Command 4	BLM Hansel	170.5125	163.0250	123.0

ZONE 3

**Brigham City (USFS Willard Peak, Box Elder County)
FDRA: 479 (Wasatch)**

Follow these procedures in the order listed

PROCEDURES	<p>Dispatch closest forces based on current dispatch level - See table below for number and type of resources to be dispatched.</p> <p><i>If report meets discretionary criteria call appropriate Duty Officer to determine response (Reference p.1)</i></p> <p>Suggested closest resources (these are only suggestions to help the dispatcher get started): FS Engine (South Weber) FS Engine (Logan) FWS Engine (Brigham City) FS Helicopter (Mt. Green) Box Elder County Fire Warden (dispatched through Box Elder County Dispatch)</p> <p>FS Ownership, verify default initial response on Red/Green map. Ensure Duty Officer and IC informed.</p> <p>If aircraft is dispatched: Consider/Initiate a TFR</p> <p>Primary notifications: FS North Zone Duty Officer State Bear River Area Duty Officer Box Elder County Dispatch (435) 732-6890 Box Elder County Warden FS Patrol Captain Marty Budzynski (435) 671-1694 or acting, if a threat to FS land</p>
-------------------	--

DISPATCH LEVEL	LOW	MODERATE	HIGH
RESOURCES (Minimum)	<ul style="list-style-type: none"> • Contact Duty Officer 	<ul style="list-style-type: none"> • 2 Resources- Engines or IA Squads • 1 Helicopter 	<ul style="list-style-type: none"> • 3 Resources- Engines or IA Squads • 1 Helicopter • ATGS • 1 SEAT

Primary Initial Attack Frequencies				
Frequency Type	Frequency Name	Receive	Transmit	Tone
Command 1	FS Mt. Ogden	169.9500	164.1250	123.0
Command 2	FS Little Mtn.	169.9500	164.1250	110.9
Command 3	FS Logan Pk	169.9500	164.1250	146.2

ZONE 4

Cache County (Logan, Hyrum, West Ant Flat)
FDRA: 479 (Wasatch)

Follow these procedures in the order listed

PROCEDURES	<p>Dispatch closest forces based on current dispatch level - See table below for number and type of resources to be dispatched.</p> <p><i>If report meets discretionary criteria call appropriate Duty Officer to determine response (Reference p.1)</i></p> <p>Suggested closest resources (these are only suggestions to help the dispatcher get started):</p> <ul style="list-style-type: none"> Cache County Fire Warden FS Engine (Logan) Helicopter (Mt. Green) FWS Engine (Brigham City) <p>**If fire is adjacent to a wilderness area, notify the FS North Zone Duty Officer.</p> <p>**Caribou-Targhee National Forest administers FS lands South of the Utah/Idaho Stateline NE of Plymouth and NW of Clarkston</p> <p>FS Ownership, verify default initial response on Red/Green map. Ensure Duty Officer and IC informed.</p> <p>If aircraft is dispatched: Consider/Initiate a TFR</p> <p>*If fire is on state, county or private lands the use of additional aviation resources will be authorized by: State Bear River Area Duty Officer and/or Fire Warden.</p> <p>Primary notifications:</p> <ul style="list-style-type: none"> FS North Zone Duty Officer State Bear River Area Duty Officer Cache County Dispatch (435) 753-7555 Cache County Warden If on or near Caribou-Targhee National Forest or Idaho stateline notify Eastern Idaho Interagency Fire Center FS Patrol Captain Marty Budzynski (435) 671-1694 or acting, if a threat to FS land
-------------------	---

DISPATCH LEVEL	LOW	MODERATE	HIGH
RESOURCES (Minimum)	•1 Engine	•2 Engines	•2 Engines •1 Helicopter

Primary Initial Attack Frequencies				
Frequency Type	Frequency Name	Receive	Transmit	Tone
**If near the Idaho border, consider using TAC 2 or 3 to assist with frequency management.				
Command 1	FS Logan Peak	169.9500	164.1250	146.2
Command 2	FS Newton Hill	169.9500	164.1250	167.9
Command 3	FS Beaver Mtn.	169.9500	164.1250	156.7
Command 4	State Logan Peak	151.2350	159.4200	151.4

ZONE 5
(Mt. Naomi Wilderness)
FDRA: 479 (Wasatch)

Follow these procedures in the order listed

PROCEDURES	<p>Dispatch closest forces based on current dispatch level - See table below for number and type of resources to be dispatched.</p> <p><i>If report meets discretionary criteria call appropriate Duty Officer to determine response (Reference p.1)</i></p> <p>Suggested closest resources (these are only suggestions to help the dispatcher get started): FS Engine (Logan) FS Helicopter (Mt. Green) FS Engine (South Weber) FS Engine (Mtn. View)</p> <p>**Fire is in the wilderness area, notify the FS North Zone Duty Officer and advise.</p> <p>FS Ownership, verify default initial response on Red/Green map. Ensure Duty Officer and IC informed.</p> <p>If aircraft is dispatched: Consider/Initiate a TFR If in USFS wilderness, helicopter recon only</p> <p>Primary notifications: FS North Zone Duty Officer If on Caribou National Forest or near Idaho state line, contact Eastern Idaho Interagency Fire Center at 208-524-7600 which dispatches the Caribou-Targhee National Forest and Idaho Falls District BLM) State Bear River Area Duty Officer Cache County Dispatch (435) 753-7555 Cache County Warden FS Patrol Captain Marty Budzynski (435) 671-1694 or acting, if a threat to FS land</p>
-------------------	--

DISPATCH LEVEL	LOW	MODERATE	HIGH
RESOURCES (Minimum)	•Contact Duty Officer	•1 Resource- Engine or IA Squad	• 1 Resource- Engine or IA Squad •1 Helicopter (recon only)

Primary Initial Attack Frequencies				
Frequency Type	Frequency Name	Receive	Transmit	Tone
<i>**If near the Idaho border, consider using TAC 2 or 3 to assist with frequency management.</i>				
Command 1	FS Logan Peak	169.9500	164.1250	146.2
Command 2	FS Beaver Mtn	169.9500	164.1250	156.7
Command 3	FS Newton Hill	169.9500	164.1250	167.9

ZONE 6

**Cache County (Logan and Ogden Ranger Dist., Hyrum, East Ant Flat)
FDRA: 479 (Wasatch)**

Follow these procedures in the order listed

PROCEDURES	<p>Dispatch closest forces based on current dispatch level - See table below for number and type of resources to be dispatched.</p> <p><i>If report meets discretionary criteria call appropriate Duty Officer to determine response (Reference p.1)</i></p> <p>Suggested closest resources (these are only suggestions to help the dispatcher get started): Cache County Fire Warden FS Engine (Logan) FS Engine (South Weber) FS Helicopter (Mt. Green) FS Engine (Mt. View)</p> <p>FS Ownership, verify default initial response on Red/Green map. Ensure Duty Officer and IC informed.</p> <p>If aircraft is dispatched: Consider/Initiate a TFR</p> <p>*If fire is on state, county or private lands the use of additional aviation resources will be authorized by: State Bear River Area Duty Officer and/or Fire Warden.</p> <p>Primary notifications: State Bear River Area Duty Officer FS North Zone Duty Officer Cache County Dispatch (435) 753-7555 Cache County Warden FS Patrol Captain Marty Budzynski (435) 671-1694 or acting, if a threat to FS land</p> <p>Other notifications (as warranted): If on Caribou National Forest or near Idaho state line, contact Eastern Idaho Interagency Fire Center at 208-524-7600 which dispatches the Caribou-Targhee National Forest and Idaho Falls District BLM)</p>
-------------------	---

DISPATCH LEVEL	LOW	MODERATE	HIGH
RESOURCES (Minimum)	•Contact Duty Officer	•2 Resources- Engines or IA Squads	•2 Resources- Engines or IA Squads •1 Helicopter

Primary Initial Attack Frequencies				
Frequency Type	Frequency Name	Receive	Transmit	Tone
**If near the Idaho border, consider using TAC 2 or 3 to assist with frequency management.				
Command 1	FS Mt. Ogden	169.9500	164.1250	110.9
Command 2	BLM Red Spur	173.6750	164.7750	131.8
Command 3	FS Logan Peak	169.9500	164.1250	146.2
Command 4	FS Beaver Mtn	169.9500	164.1250	156.7

ZONE 7

**Rich County, Ogden / Logan District
FDRA: 479 (Wasatch)**

Follow these procedures in the order listed

PROCEDURES	<p>Dispatch closest forces based on current dispatch level - See table below for number and type of resources to be dispatched.</p> <p><i>If report meets discretionary criteria call appropriate Duty Officer to determine response (Reference p.1)</i></p> <p>Suggested closest resources (these are only suggestions to help the dispatcher get started):</p> <ul style="list-style-type: none"> Rich County Fire Warden FS Engine (Logan) FS Engine (South Weber) FS Engine (Mt. View) FS Helicopter (Mt. Green) <p>FS Ownership, verify default initial response on Red/Green map. Ensure Duty Officer and IC informed.</p> <p>If aircraft is dispatched: Consider/Initiate a TFR</p> <p>*If fire is on state, county or private lands the use of additional aviation resources will be authorized by: State Bear River Area Duty Officer and/or Fire Warden.</p> <p>Primary notifications:</p> <ul style="list-style-type: none"> FS North Zone Duty Officer Rich County Dispatch (435) 793-2285 Rich County Warden State Bear River Area Duty Officer FS Patrol Captain Marty Budzynski (435) 671-1694 or acting, if a threat to FS land <p>Other notifications (as warranted): East Idaho Interagency Dispatch at (208) 524-7600</p>
-------------------	---

DISPATCH LEVEL	LOW	MODERATE	HIGH
RESOURCES (Minimum)	<ul style="list-style-type: none"> •1 Engine 	<ul style="list-style-type: none"> •2 Engines •1 Helicopter 	<ul style="list-style-type: none"> • 3 Engines • 1 Helicopter • ATGS •2 SEAT

Primary Initial Attack Frequencies				
Frequency Type	Frequency Name	Receive	Transmit	Tone
**If near the Idaho border, consider using TAC 2 or 3 to assist with frequency management.				
Command 1	BLM Red Spur	173.675	164.775	131.8
Command 2	FS Beaver Mtn	169.950	164.125	156.7
Command 3	FS Medicine Butte	173.7750	164.9375	167.9

ZONE 8

**Rich County, Woodruff, Randolph, West Desert BLM, Ogden RD
FDRA: 479 (Wasatch)**

Follow these procedures in the order listed

PROCEDURES	<p>Dispatch closest forces based on current dispatch level - See table below for number and type of resources to be dispatched.</p> <p><i>If report meets discretionary criteria call appropriate Duty Officer to determine response (Reference p.1)</i></p> <p>All attempts will be made to assign a Resource Advisor (READ) on BLM ownership, due to Sage Grouse area.</p> <p>Suggested closest resources (these are only suggestions to help the dispatcher get started): Rich County Fire Warden FS Engine (Mt.View) FS Engine (Logan) FS Engine (South Weber) FS Helicopter (Mt. Green)</p> <p>FS Ownership, verify default initial response on Red/Green map. Ensure Duty Officer and IC informed.</p> <p>If aircraft is dispatched: Consider/Initiate a TFR</p> <p>*If fire is on state, county or private lands the use of additional aviation resources will be authorized by: State Bear River Area Duty Officer and/or Fire Warden.</p> <p>Primary notifications: FS North Zone Duty Officer Rich County Dispatch (435) 793-2285 Rich County Warden BLM Duty Officer State Bear River Area Duty Officer</p> <p>Other notifications (as warranted): East Idaho Interagency Dispatch (208) 524-7600 Casper Interagency Dispatch Center (800) 295-9952 FS Patrol Captain Marty Budzynski (435) 671-1694 or acting, if a threat to FS land</p>
-------------------	---

DISPATCH LEVEL	LOW	MODERATE	HIGH
RESOURCES (Minimum)	<ul style="list-style-type: none"> •1 Engine 	<ul style="list-style-type: none"> •2 Engines • 1 Water tender •ATGS 	<ul style="list-style-type: none"> •3 Engines •1 Helicopter •1 Water Tender • 1 Dozer •ATGS •2 SEAT

Primary Initial Attack Frequencies				
Frequency Type	Frequency Name	Receive	Transmit	Tone
**If near the Idaho border, consider using TAC 2 or 3 to assist with frequency management.				
Command 1	BLM Red Spur	173.6750	164.7750	131.8
Command 2	FS Monte Cristo	169.9500	164.1250	136.5
Command 3	FS Medicine Butte	173.7750	164.9375	167.9

ZONE 9
Weber County, Huntsville
FDRA: 479 (Wasatch)

Follow these procedures in the order listed

PROCEDURES	<p>Dispatch closest forces based on current dispatch level - See table below for number and type of resources to be dispatched.</p> <p><i>If report meets discretionary criteria call appropriate Duty Officer to determine response (Reference p.1)</i></p> <p>Suggested closest resources (these are only suggestions to help the dispatcher get started): FS Engine (South Weber) Weber County Fire Warden FS Helicopter (Mt. Green) FWS Engine (Brigham City)</p> <p>FS Ownership, verify default initial response on Red/Green map. Ensure Duty Officer and IC informed.</p> <p>If aircraft is dispatched: Consider/Initiate a TFR</p> <p>*If fire is on state, county or private lands the use of additional aviation resources will be authorized by: State Bear River Area Duty Officer and/or Fire Warden.</p> <p>Primary notifications: Weber/Morgan County Dispatch (801)629-8221 Weber County Warden State Bear River Area Duty Officer</p> <p>Other notifications (as warranted): FS North Zone Duty Officer FS Patrol Captain Marty Budzynski (435) 671-1694 or acting, if a threat to FS land</p>
-------------------	---

DISPATCH LEVEL	LOW	MODERATE	HIGH
RESOURCES (Minimum)	•1 Engine	•1 Helicopter •2 Engines	•1 Helicopter •3 Engines •1 Water Tender

Primary Initial Attack Frequencies				
Frequency Type	Frequency Name	Receive	Transmit	Tone
Command 1	FS Mt. Ogden	169.9500	164.1250	110.9
Command 2	FS Monte Cristo	169.9500	164.1250	136.5
Command 3	FS Red Spur	169.9500	164.1250	131.8

ZONE 10
Weber County, Uinta Wasatch Cache National Forest
FDRA: 479 (Wasatch)

Follow these procedures in the order listed

PROCEDURES	<p>Dispatch closest forces based on current dispatch level - See table below for number and type of resources to be dispatched.</p> <p><i>If report meets discretionary criteria call appropriate Duty Officer to determine response (Reference p.1)</i></p> <p>Suggested closest resources (these are only suggestions to help the dispatcher get started): FS Engine (South Weber) Weber County Fire Warden Davis County Fire Warden FWS Engine (Brigham City) FS Engine (Salt Lake) NWS Engine (Salt Lake) FS Helicopter (Mt. Green)</p> <p>FS Ownership, verify default initial response on Red/Green map. Ensure Duty Officer and IC informed.</p> <p>If aircraft is dispatched: Consider/Initiate a TFR</p> <p>*If fire is on state, county or private lands the use of additional aviation resources will be authorized by: State Bear River Area Duty Officer and/or Fire Warden</p> <p>Primary notifications: FS Zone Duty Officer. Call appropriate ZDO based upon location. If close to border notify both. (North and South) Weber/Morgan County Dispatch (801) 629-8221 (if fire is in/or threat to either county) Weber County Warden State Bear River Area Duty Officer State Wasatch Front Area Duty Officer- (if is near/threats Davis or Morgan County) FS Patrol Captain Marty Budzynski (435) 671-1694 or acting, if a threat to FS land</p>
-------------------	--

DISPATCH LEVEL	LOW	MODERATE	HIGH
RESOURCES (Minimum)	<ul style="list-style-type: none"> •2 Engines or IA Squad 	<ul style="list-style-type: none"> •3 Engines or combo w/ IA Squad •1 Helicopter 	<ul style="list-style-type: none"> •4 Engines or combo w/ IA Squad •1 Helicopter •ATGS

Primary Initial Attack Frequencies				
Frequency Type	Frequency Name	Receive	Transmit	Tone
Command 1	FS Mt. Ogden	169.9500	164.1250	110.9
Command 3	FS Fairmont	173.7750	164.9375	110.9
Command 2	FS Little Mtn	169.9500	164.1250	123.0
Command 4	BLM Francis Peak	173.6750	164.7750	167.9
Command 5	FS Shepard Peak	173.7750	164.9375	136.5

ZONE 11
Weber County (Ogden)
FDRA: 478 (Desert)

Follow these procedures in the order listed

PROCEDURES	<p>Dispatch closest forces based on current dispatch level - See table below for number and type of resources to be dispatched.</p> <p><i>If report meets discretionary criteria call appropriate Duty Officer to determine response (Reference p.1)</i></p> <p>***IF WITHIN ½ MILE OF FS BOUNDARY OR ON FS LAND: (Use run card 10)</p> <p>Suggested closest resources (these are only suggestions to help the dispatcher get started): Weber County Fire Warden FS Engine (South Weber) FWS Engine (Brigham City)</p> <p>If aircraft is dispatched: Consider/Initiate a TFR</p> <p>*If fire is on state, county or private lands the use of additional aviation resources will be authorized by: State Bear River Area Duty Officer and/or Fire Warden</p> <p>Primary notifications: Weber/Morgan County Dispatch (801) 629-8221 Weber County Warden State Bear River Area Duty Officer FS North Zone Duty Officer (if adjacent to USFS ownership)</p> <p>Other notification (as warranted): FS South Zone Duty Officer FS Patrol Captain Marty Budzynski (435) 671-1694 or acting, if a threat to FS land</p>
-------------------	---

DISPATCH LEVEL	LOW	MODERATE	HIGH
RESOURCES (Minimum)	•1 Engine	•1 Engine	•1 Engine

Primary Initial Attack Frequencies				
Frequency Type	Frequency Name	Receive	Transmit	Tone
Command 1	FS Mt. Ogden	169.9500	164.1250	110.9
Command 2	FS Little Mtn	169.9500	164.1250	123.0
Command 3	BLM Francis Peak	173.6750	164.7750	167.9

ZONE 12
West Davis County (Antelope Island)
FDRA: 478 (Desert)

Follow these procedures in the order listed

PROCEDURES	<p>*If not on Antelope Island, make notifications only.</p> <p>Dispatch closest forces based on current dispatch level - See table below for number and type of resources to be dispatched.</p> <p><i>If report meets discretionary criteria call appropriate Duty Officer to determine response (Reference p.1)</i></p> <p>***IF WITHIN ½ MILE OF FS BOUNDARY OR ON FS LAND: (Use Run Card 10)</p> <p>Suggested closest resources (these are only suggestions to help the dispatcher get started): Davis County Fire Warden FS Engine (South Weber) NWS Engine (Salt Lake)</p> <p>If aircraft is dispatched: Consider/Initiate a TFR</p> <p>*If fire is on state, county or private lands the use of additional aviation resources will be authorized by: State Wasatch Front Area Duty Officer and/or Fire Warden</p> <p>Primary notifications: Davis County Dispatch (801) 451-4150 Davis County Warden State Wasatch Front Area Duty Officer FS South Zone Duty Officer (if adjacent to USFS Ownership) FS North Zone Duty Officer (if adjacent to USFS Ownership)</p> <p>Other notifications (as warranted): FS Patrol Captain Marty Budzynski (435) 671-1694 or acting, if a threat to FS land Bear River Area FMO</p>
-------------------	--

(ANTELOPE ISLAND ONLY)

DISPATCH LEVEL	LOW	MODERATE	HIGH
RESOURCES (Minimum)	<ul style="list-style-type: none"> •1 Engine 	<ul style="list-style-type: none"> •1 Engine •1 Helicopter • ATGS 	<ul style="list-style-type: none"> •2 Engines •1 Helicopter •1 Water Tender • ATGS • 2 SEAT

Primary Initial Attack Frequencies				
Frequency Type	Frequency Name	Receive	Transmit	Tone
Command 1 (East Side)	FS Mt. Ogden	169.9500	164.1250	110.9
Command 2 (West Side)	FS Fairmont	173.7750	164.9375	110.9
Command 3	BLM Francis Peak	173.6750	164.7750	167.9
Command 4	FS Shepard Peak	1737750	164.9375	136.5

ZONE 13
Davis County, Uinta Wasatch Cache National Forest
FDRA: 479 (Wasatch)

Follow these procedures in the order listed

PROCEDURES	<p>Dispatch closest forces based on current dispatch level - See table below for number and type of resources to be dispatched.</p> <p><i>If report meets discretionary criteria call appropriate Duty Officer to determine response (Reference p.1)</i></p> <p>Suggested closest resources (these are only suggestions to help the dispatcher get started):</p> <ul style="list-style-type: none"> FS Engine (South Weber) Weber County Fire Warden Davis County Fire Warden FS Engine (Salt Lake) NWS Engine (Salt Lake) FWS Engine (Brigham City) FS Helicopter (Mt. Green) <p>FS Ownership, verify default initial response on Red/Green map. Ensure Duty Officer and IC informed.</p> <p>If aircraft is dispatched: Consider/Initiate a TFR</p> <p>*If fire is on state, county or private lands the use of additional aviation resources will be authorized by: State Wasatch Front Area Duty Officer and/or Fire Warden</p> <p>Primary notifications:</p> <ul style="list-style-type: none"> FS Zone Duty Officer. Call appropriate ZDO based upon location. If close to border notify both. (North and South) Davis County Warden Davis County Dispatch (801) 451-4150 (if fire is in/or threat to Davis County) State Bear River Area Duty Officer (if near/threat to Davis County) State Wasatch Front Area Duty Officer <p>Other notifications (as warranted):</p> <ul style="list-style-type: none"> FS Patrol Captain Marty Budzynski (435) 671-1694 or acting, if a threat to FS land Bear River Area Duty Officer
-------------------	--

DISPATCH LEVEL	LOW	MODERATE	HIGH
RESOURCES (Minimum)	<ul style="list-style-type: none"> •2 Engines or combo w IA Squad 	<ul style="list-style-type: none"> •3 Engines or combo w IA Squad •1 Helicopter 	<ul style="list-style-type: none"> •4 Engines or combo w IA Squad •1 Helicopter •ATGS

Primary Initial Attack Frequencies				
Frequency Type	Frequency Name	Receive	Transmit	Tone
Command 1	FS Fairmont	173.7750	164.9375	110.9
Command 2	FS Little Mtn	169.9500	164.1250	123.0
Command 3	BLM Francis Peak	173.6750	164.7750	167.9
Command 4	FS Shepard	172.4000	164.8250	131.8

ZONE 14

**Morgan County
FDRA: 479 (Wasatch)**

Follow these procedures in the order listed

PROCEDURES	<p>Dispatch closest forces based on current dispatch level - See table below for number and type of resources to be dispatched.</p> <p><i>If report meets discretionary criteria call appropriate Duty Officer to determine response (Reference p.1)</i></p> <p>Suggested closest resources (these are only suggestions to help the dispatcher get started): Morgan County Fire Warden FS Engine (South Weber) FS Engine (Salt Lake) NWS Engine (Salt Lake) FS Helicopter (Mt. Green)</p> <p>FS Ownership, verify default initial response on Red/Green map. Ensure Duty Officer and IC informed.</p> <p>If aircraft is dispatched: Notify State Wasatch Front Area Duty Officer Consider/Initiate a TFR</p> <p>*If fire is on state, county or private lands the use of additional aviation resources will be authorized by: State Wasatch Front Area Duty Officer and/or Fire Warden</p> <p>Primary notifications: State Wasatch Front Area Duty Officer FS Zone Duty Officer Weber/Morgan County Dispatch (801) 629-8221 Morgan County Fire Warden (801) 829-2048</p> <p>Other notifications (as warranted): FS Patrol Captain Marty Budzynski (435) 671-1694 or acting, if a threat to FS land Appropriate FS Zone Duty Officer if near the FS boundary Bear River Area Duty Officer</p>
-------------------	---

DISPATCH LEVEL	LOW	MODERATE	HIGH
RESOURCES (Minimum)	•1 Engine	•1 Engine	•2 Engines •1 Helicopter

Primary Initial Attack Frequencies				
Frequency Type	Frequency Name	Receive	Transmit	Tone
Command 1	FS Mt. Ogden	169.9500	164.1250	110.9
Command 2	BLM Francis Peak	173.6750	164.7750	167.9

ZONE 15
Summit and Wasatch County
FDRA: 479 (Wasatch)

Follow these procedures in the order listed

PROCEDURES	<p>Dispatch closest forces based on current dispatch level - See table below for number and type of resources to be dispatched.</p> <p><i>If report meets discretionary criteria call appropriate Duty Officer to determine response (Reference p.1)</i></p> <p>Suggested closest resources (these are only suggestions to help the dispatcher get started): Summit County Fire Warden (if in Summit County) Wasatch County Fire Warden (if in Wasatch County) FS Engine (Mt. View) Summit County FS Engine (Heber) Wasatch County</p> <p>If aircraft is dispatched: Consider/Initiate a TFR</p> <p>*If fire is on state, county or private lands the use of additional aviation resources will be authorized by: State Northeast Area Duty Officer.</p> <p>Primary notifications: State Northeast Area Duty Officer FS Zone Duty Officer. Call appropriate ZDO based upon location. If close to border notify both. (South and East) Summit County Dispatch Summit County Warden Wasatch County Warden Wasatch County Dispatch</p> <p>Other notifications (as warranted): Wyoming Uinta County Dispatch FS North Zone Duty Officer FS East Zone Duty Officer Bear River Area Duty Officer For fires in Rock Springs, Wyoming, contact Casper Interagency Dispatch Center at (800) 295-9953 FS Patrol Captain Marty Budzynski (435) 671-1694 or acting, if a threat to FS land</p>
-------------------	--

DISPATCH LEVEL	LOW	MODERATE	HIGH
RESOURCES (Minimum)	•Contact Duty Officer	•1 Resource- Engine or IA Squad	•2 Resources- Engines or IA Squads

Primary Initial Attack Frequencies				
Frequency Type	Frequency Name	Receive	Transmit	Tone
Command 1	FS China Ridge	173.7750	164.9375	146.2
Command 5	FS Medicine Butte	173.7750	164.9375	167.9
Command 2	FS Elizabeth Peak	173.7750	164.9375	103.5
Command 3	FS Clayton Ridge	172.3750	164.8750	110.9
Command 4	FS Scotts Peak (Net 3)	172.4000	164.8250	110.9

ZONE 16
Kamas/Mt. View/Evanston District (USFS ownership)
FDRA: 480 (Uinta)

Follow these procedures in the order listed

PROCEDURES	<p>Dispatch closest forces based on current dispatch level - See table below for number and type of resources to be dispatched.</p> <p><i>If report meets discretionary criteria call appropriate Duty Officer to determine response (Reference p.1)</i></p> <p>Suggested closest resources (these are only suggestions to help the dispatcher get started):</p> <ul style="list-style-type: none"> FS Engine (Heber) FS Engine (Mt. View) FS Helicopter (Mt. Green) Summit County Fire Warden Wasatch County Fire Warden Prevention (Heber, Salt Lake) Wasatch County Prevention (Mt. View) Summit County <p>FS Ownership, verify default initial response on Red/Green map. Ensure Duty Officer and IC informed.</p> <p>If aircraft is dispatched: Consider/Initiate a TFR</p> <p>*If fire is on state, county or private lands the use of additional aviation resources will be authorized by: State Northeast Area Duty Officer.</p> <p>Primary notifications:</p> <ul style="list-style-type: none"> State Northeast Area Duty Officer FS East Zone Duty Officer (if on or threats USFS Ownership) Summit County Dispatch (435) 615-3600 Summit County Warden Wasatch County Warden Wasatch County Dispatch <p>Other notifications (as warranted):</p> <ul style="list-style-type: none"> FS Patrol Captain Marty Budzynski (435) 671-1694 or acting, if a threat to FS land Casper Interagency Dispatch Center – (800) 295-9953
-------------------	--

DISPATCH LEVEL	LOW	MODERATE	HIGH
RESOURCES (Minimum)	• Contact Duty Officer	• 1 Resource- Engine or IA Squad or Prevention	• 2 Resources- Engines or IA Squads

Primary Initial Attack Frequencies				
Frequency Type	Frequency Name	Receive	Transmit	Tone
Command 4	FS Humpy Pk	172.4000	164.8250	123.0
Command 3	FS Bald Mtn	172.4000	164.8250	131.8
Command 2	FS Scotts Pk (Net 3)	172.4000	164.8250	110.9
Command 5	FS Elizabeth	173.7750	164.9375	103.5
Command 1	FS Soapstone	172.4000	164.8250	136.5
Command 6	FS China Ridge	173.7750	164.9375	146.2
Command 7	FS Poison	173.7750	164.9375	156.7

ZONE 17

**High Uintas Wilderness (FS land)
FDRA: 480 (Uinta)**

Follow these procedures in the order listed

PROCEDURES	<p>Dispatch closest forces based on current dispatch level - See table below for number and type of resources to be dispatched.</p> <p><i>If report meets discretionary criteria call appropriate Duty Officer to determine response (Reference p.1)</i></p> <p>Suggested closest resources (these are only suggestions to help the dispatcher get started): FS Helicopter (Mtn Green) FS Engine (Mt View) FS Engine (Heber)</p> <p>FS Ownership, verify default initial response on Red/Green map. Ensure Duty Officer and IC informed.</p> <p>If aircraft is dispatched: Consider/Initiate a TFR</p> <p>Primary notifications: FS East Zone Duty Officer State NE Duty Officer Summit County Dispatch (435) 615-3600 FS Patrol Captain Marty Budzynski (435) 671-1694 or acting, if a threat to FS land</p> <p>Other notifications (as warranted): Summit County Warden State Northeast Area Duty Officer Uintah Basin Interagency Fire Center</p>
-------------------	---

DISPATCH LEVEL	LOW	MODERATE	HIGH
RESOURCES (Minimum)	• Contact Duty Officer	• Contact Duty Officer	• Contact Duty Officer

Primary Initial Attack Frequencies				
Frequency Type	Frequency Name	Receive	Transmit	Tone
Command 1	FS Poison	173.7750	164.9375	156.7
Command 2	FS China Ridge	173.7750	164.9375	146.2
Command 3	FS Bald Mtn	172.4000	164.8250	131.8

ZONE 18

East Wasatch County (Raspberry Knoll, Strawberry BIA Land)
FDRA: 479 (Wasatch)

Follow these procedures in the order listed

PROCEDURES	<p>If Fire is on Uintah Ouray BIA Land- Uinta-Wasatch Cache NF has suppression responsibility for BIA land just southeast of the Strawberry Reservoir. Dispatchers must notify the BIA of the response.</p> <p><i>If report meets discretionary criteria call appropriate Duty Officer to determine response (Reference p.1)</i></p> <p>Dispatch closest forces based on current dispatch level - See table below for number and type of resources to be dispatched.</p> <p>Suggested closest resources (these are only suggestions to help the dispatcher get started): FS Engine (Heber) FS Engine (Spanish Fork) Uintah Basin Fire Center may have an engine in Duchesne that is closer</p> <p>If aircraft is dispatched: Consider/Initiate a TFR</p> <p>*If fire is on state, county or private lands the use of additional aviation resources will be authorized by: State Northeast Area Duty Officer.</p> <p>Primary notifications: State Northeast Area Duty Officer Wasatch County Dispatch (435) 654-1411 Wasatch County Warden</p> <p>Other notifications (as warranted): Uintah Basin Interagency Fire Center (435) 789-7021 FS East Zone Duty Officer (if adjacent to USFS ownership) BIA AFMO (if on/near BIA ownership) FS Patrol Captain Marty Budzynski (435) 671-1694 or acting, if a threat to FS land Duchesne County Warden</p>
-------------------	--

DISPATCH LEVEL	LOW	MODERATE	HIGH
RESOURCES (Minimum)	•Contact Duty Officer	•1 Resource- Engine or IA Squad	•2 Resources- Engines or IA Squads

Primary Initial Attack Frequencies				
Frequency Type	Frequency Name	Receive	Transmit	Tone
Command 1	FS Currant Creek	172.4000	164.8250	146.2
Command 2	FS Strawberry	172.4000	164.8250	156.7

ZONE 19

**Heber District (Soldier Creek/Windy Ridge – USFS ownership)
FDRA: 479 (Wasatch)**

Follow these procedures in the order listed

PROCEDURES	<p>Dispatch closest forces based on current dispatch level - See table below for number and type of resources to be dispatched.</p> <p><i>If report meets discretionary criteria call appropriate Duty Officer to determine response (Reference p.1)</i></p> <p>Suggested closest resources (these are only suggestions to help the dispatcher get started): FS Engine (Heber) FS Engine (Spanish Fork) FS Engine (Pleasant Grove) FS IA Squad (Spanish Fork) FS Helicopter (Mtn Green) Wasatch County Fire Warden</p> <p>FS Ownership, verify default initial response on Red/Green map. Ensure Duty Officer and IC informed.</p> <p>If aircraft is dispatched: Consider/Initiate a TFR</p> <p>*If fire is on state, county or private lands the use of additional aviation resources will be authorized by: State Northeast Area Duty Officer.</p> <p>Primary notifications: FS Zone Duty Officer. Call appropriate ZDO based upon location. If close to border notify both (East and South; prompt for Resource Advisor and Information Officer) State Northeast Area Duty Officer Wasatch County Warden Wasatch County Dispatch 435-654-1411 (courtesy call) FS Patrol Captain Marty Budzynski (435) 671-1694 or acting, if a threat to FS land</p> <p>Other notifications (as warranted): BIA AFMO (if on/near BIA ownership)</p>
-------------------	--

DISPATCH LEVEL	LOW	MODERATE	HIGH
RESOURCES (Minimum)	• Contact Duty Officer	• 1 Resource- Engine or IA Squad	• 2 Resources- Engines or IA Squads

Primary Initial Attack Frequencies				
Frequency Type	Frequency Name	Receive	Transmit	Tone
Command 1	FS Currant Creek	172.4000	164.8250	146.2
Command 2	FS Strawberry	172.4000	164.8250	156.7
Command 3	FS Soapstone (Net 3)	172.4000	164.8250	134.5

ZONE 20
Summit and Wasatch County
FDRA: 479 (Wasatch)

Follow these procedures in the order listed

PROCEDURES	<p>Dispatch closest forces based on current dispatch level - See table below for number and type of resources to be dispatched.</p> <p><i>If report meets discretionary criteria call appropriate Duty Officer to determine response (Reference p.1)</i></p> <p>Suggested closest resources (these are only suggestions to help the dispatcher get started): Wasatch County Fire Warden Summit County Fire Warden FS Engine (Heber)</p> <p>Primary notifications: State Northeast Area Duty Officer Wasatch County Dispatch (435) 654-1411 Wasatch Count Warden</p> <p>Other notifications (as warranted): FS South Zone Duty Officer FS East Zone Duty Officer BLM Duty Officer Summit County Warden FS Patrol Captain Marty Budzynski (435) 671-1694 or acting, if a threat to FS land</p>
-------------------	--

DISPATCH LEVEL	LOW	MODERATE	HIGH
RESOURCES (Minimum)	•Contact Duty Officer	•1 Engine	•3 Resources- Engines or IA Squads

Primary Initial Attack Frequencies				
Frequency Type	Frequency Name	Receive	Transmit	Tone
Command 1	FS Clayton Peak	172.3750	164.8750	110.9
Command 2	FS Scotts Peak (Net 3)	172.4000	164.8250	110.9
Command 3	FS Strawberry	172.4000	164.8250	156.7

ZONE 21

Hobble Creek Canyon (Includes SF and PG Districts)
FDRA: 479 (Wasatch)

Follow these procedures in the order listed

PROCEDURES	<p>Dispatch closest forces based on current dispatch level - See table below for number and type of resources to be dispatched.</p> <p><i>If report meets discretionary criteria call appropriate Duty Officer to determine response (Reference p.1)</i></p> <p>Suggested closest resources (these are only suggestions to help the dispatcher get started): FS Engine (Pleasant Grove) FS Engine (Spanish Fork) FS IA Squad (Spanish Fork) BLM Helicopter (Tooele) Utah County Engine Utah County IA Squad</p> <p>FS Ownership, verify default initial response on Red/Green map. Ensure Duty Officer and IC informed.</p> <p style="text-align: center; color: blue;">*PROMPT IC TO ORDER LAW ENFORCEMENT FOR TRAFFIC CONTROL</p> <p>If aircraft is dispatched: Consider/Initiate a TFR</p> <p>*If fire is on state, county or private lands the use of additional aviation resources will be authorized by: State Wasatch Front Area Duty Officer and/or Fire Warden</p> <p>Primary notifications: FS South Zone Duty Officer Utah Valley Dispatch (801) 794-3970 State Wasatch Front Area Duty Officer Utah County Fire Warden FS Patrol Captain Marty Budzynski (435) 671-1694 or acting, if a threat to FS land</p> <p>Other notifications (as warranted): State Northeast Area Duty Officer (if in Provo Canyon corridor) FS East Zone Duty Officer</p>
-------------------	---

DISPATCH LEVEL	LOW	MODERATE	HIGH
RESOURCES (Minimum)	•1 Resource- Engine or IA Squad	•2 Resources- Engines or IA Squads •1 Helicopter	•3 Resources- Engines or IA squads •1 Helicopter

Primary Initial Attack Frequencies				
Frequency Type	Frequency Name	Receive	Transmit	Tone
Command 1	FS Lake Mtn.	172.3750	164.8750	131.8
Command 2	FS Teat Mtn.	172.3750	164.8750	136.5
Command 3	BLM West Mtn	173.6750	164.7750	156.7
Command 4	Strawberry Ridge	172.4000	164.8250	156.7

ZONE 22

Spanish Fork Canyon/White River/Tie Fork/Sheep Creek
(FS land and within .5 miles of boundary) east of Diamond Fork
FDRA: 479 (Wasatch)

Follow these procedures in the order listed

PROCEDURES	<p>Dispatch closest forces based on current dispatch level - See table below for number and type of resources to be dispatched.</p> <p><i>If report meets discretionary criteria call appropriate Duty Officer to determine response (Reference p.1)</i></p> <p>Suggested closest resources (these are only suggestions to help the dispatcher get started):</p> <ul style="list-style-type: none"> FS Engine (Heber) FS Engine (Spanish Fork) FS Engine (Pleasant Grove) Utah County IA Squad Utah County Engine FS IA Squad (Spanish Fork) <p>FS Ownership, verify default initial response on Red/Green map. Ensure Duty Officer and IC informed.</p> <p>If aircraft is dispatched: Consider/Initiate a TFR</p> <p>*If fire is on state, county or private lands the use of additional aviation resources will be authorized by: State Wasatch Front Area Duty Officer and/or Fire Warden</p> <p>Primary notifications:</p> <ul style="list-style-type: none"> FS South Zone Duty Officer Utah Valley Dispatch (801) 794-3970 State Wasatch Front Area Duty Officer Utah County Fire Warden FS Patrol Captain Marty Budzynski (435) 671-1694 or acting, if a threat to FS land <p>Other notifications (as warranted):</p> <ul style="list-style-type: none"> BLM Duty Officer (if on or in close proximity (1/2 mile) to BLM land) FS East Zone Duty Officer if near the boarder
-------------------	---

DISPATCH LEVEL	LOW	MODERATE	HIGH
RESOURCES (Minimum)	<ul style="list-style-type: none"> •Contact Duty Officer 	<ul style="list-style-type: none"> •2 Resources- Engines or IA Squads 	<ul style="list-style-type: none"> • 2 Resources- Engines or IA Squads • 1 Helicopter

Primary Initial Attack Frequencies				
Frequency Type	Frequency Name	Receive	Transmit	Tone
Command 1	FS Teat Mtn.	172.3750	164.8750	136.5
Command 2	FS Ford Ridge	172.3750	164.8750	146.2

ZONE 23

Spanish Fork Canyon (FS land and within .5 miles of boundary) / State and Private, County
FDRA: 479 (Wasatch)

Follow these procedures in the order listed

PROCEDURES	<p>Dispatch closest forces based on current dispatch level - See table below for number and type of resources to be dispatched.</p> <p><i>If report meets discretionary criteria call appropriate Duty Officer to determine response (Reference p.1)</i></p> <p>Suggested closest resources (these are only suggestions to help the dispatcher get started):</p> <ul style="list-style-type: none"> Utah County Engine Utah County IA Squad FS Engine (Spanish Fork) FS Engine (Pleasant Grove) FS Engine (Heber) FS IA Squad (Spanish Fork) <p>*PROMPT IC TO ORDER LAW ENFORCEMENT FOR TRAFFIC CONTROL</p> <p>If aircraft is dispatched: Consider/Initiate a TFR</p> <p>*If fire is on state, county or private lands the use of additional aviation resources will be authorized by: State Wasatch Front Area Duty Officer and/or Fire Warden</p> <p>Primary notifications:</p> <ul style="list-style-type: none"> FS South Zone Duty Officer Utah Valley Dispatch (801) 794-3970 State Wasatch Front Area Duty Officer Utah County Fire Warden <p>Other notifications (as warranted):</p> <ul style="list-style-type: none"> FS East Zone if near the boarder BLM Duty Officer Moab Interagency Fire Center (435) 259-1850 FS Patrol Captain Marty Budzynski (435) 671-1694 or acting, if a threat to FS land
-------------------	--

DISPATCH LEVEL	LOW	MODERATE	HIGH
RESOURCES (Minimum)	•Contact Duty Officer	•2 Resources- Engines or IA Squads	•3 Resources- Engines or IA Squads

Primary Initial Attack Frequencies				
Frequency Type	Frequency Name	Receive	Transmit	Tone
Command 1	FS Teat Mtn.	172.3750	164.8750	136.5
Command 2	FS Ford Ridge	172.3750	164.8750	146.2
Command 3	FS Lake Mtn.	172.3750	164.8750	131.8

ZONE 24

Covered Bridge (Urban Interface State and Private, County)
FDRA: 479 (Wasatch)

Follow these procedures in the order listed

PROCEDURES	<p>Dispatch closest forces based on current dispatch level - See table below for number and type of resources to be dispatched.</p> <p><i>If report meets discretionary criteria call appropriate Duty Officer to determine response (Reference p.1)</i></p> <p>Suggested closest resources (these are only suggestions to help the dispatcher get started): Utah County Engine Utah County IA Squad FS Engine (Spanish Fork) FS Engine (Pleasant Grove) FS IA Squad (Spanish Fork)</p> <p>*PROMPT IC TO ORDER LAW ENFORCEMENT FOR TRAFFIC CONTROL</p> <p>If aircraft is dispatched: Consider/Initiate a TFR</p> <p>*If fire is on state, county or private lands the use of additional aviation resources will be authorized by: State Wasatch Front Area Duty Officer and/or Fire Warden</p> <p>Primary notifications: Utah Valley Dispatch (801) 794-3970 State Wasatch Front Area Duty Officer Utah County Fire Warden</p> <p>Other notifications (as warranted): Moab Interagency Fire Center (435) 259-1850 FS South Zone Duty Officer FS Patrol Captain Marty Budzynski (435) 671-1694 or acting, if a threat to FS land</p>
-------------------	--

DISPATCH LEVEL	LOW	MODERATE	HIGH
RESOURCES (Minimum)	<ul style="list-style-type: none"> •1 Engine 	<ul style="list-style-type: none"> •1 Engine • 1 additional Resource - Engine or IA Squad • 1 Helicopter 	<ul style="list-style-type: none"> •2 Engines •1 Helicopter •1 IA Squad •ATGS •2 SEAT

Primary Initial Attack Frequencies				
Frequency Type	Frequency Name	Receive	Transmit	Tone
Command 1	FS Teat Mtn.	172.3750	164.8750	136.5
Command 2	Horseshoe	172.3750	164.8750	156.7

ZONE 25

Nebo Unit (USFS, Private, Utah County)
FDRA: 479 (Wasatch)

Follow these procedures in the order listed

PROCEDURES	<p>Dispatch closest forces based on current dispatch level - See table below for number and type of resources to be dispatched.</p> <p><i>If report meets discretionary criteria call appropriate Duty Officer to determine response (Reference p.1)</i></p> <p>Suggested closest resources (these are only suggestions to help the dispatcher get started): FS Engine (Spanish Fork) FS IA Squad (Spanish Fork) FS Prevention (Spanish Fork) Utah County Engine Utah County IA Squad</p> <p>FS Ownership, verify default initial response on Red/Green map. Ensure Duty Officer and IC informed.</p> <p>If aircraft is dispatched: Consider/Initiate a TFR</p> <p>*If fire is on state, county or private lands the use of additional aviation resources will be authorized by: State Wasatch Front Area Duty Officer and/or Fire Warden</p> <p>Primary notifications: FS South Zone Duty Officer Utah Valley Dispatch (801) 794-3970 State Wasatch Front Area Duty Officer Utah County Fire Warden FS Patrol Captain Marty Budzynski (435) 671-1694 or acting, if a threat to FS land</p> <p>Other notifications (as warranted): Richfield Interagency Fire Center (435) 896-8404 (courtesy call) Juab County Warden</p>
-------------------	--

DISPATCH LEVEL	LOW	MODERATE	HIGH
RESOURCES (Minimum)	<ul style="list-style-type: none"> •Contact Duty Officer 	<ul style="list-style-type: none"> •1 Resource- Engine or IA Squad 	<ul style="list-style-type: none"> •2 Resources- Engines or IA Squads • 1 Helicopter

Primary Initial Attack Frequencies				
Frequency Type	Frequency Name	Receive	Transmit	Tone
Command 1	FS Teat Mtn.	172.3750	164.8750	136.5
Command 2	FS Horseshoe	172.3750	164.8750	156.7
Command 3	FS Lake Mtn	172.3750	164.8750	131.8
Command 4	BLM West Mtn	173.6750	164.7750	156.7

ZONE 26

South Nebo Unit (USFS, Private, Juab County)
FDRA: 479 (Wasatch)

Follow these procedures in the order listed

PROCEDURES	<p>**Contact <u>Richfield Interagency Fire Center</u> to coordinate the response. -Ensure aviation dispatches and assigned air frequencies are coordinated between Richfield Interagency Fire Center and NUIFC.</p> <p><i>If report meets discretionary criteria call appropriate Duty Officer to determine response (Reference p.1)</i></p> <p>Dispatch closest forces based on current dispatch level - See table below for number and type of resources to be dispatched.</p> <p>Suggested closest resources (these are only suggestions to help the dispatcher get started): Juab County Fire Warden FS Engine (Spanish Fork) FS IA Squad (Spanish Fork) FS Prevention (Spanish Fork) BLM Engine (Little Sahara) FS Engine (Pleasant Grove)</p> <p>FS Ownership, verify default initial response on Red/Green map. Ensure Duty Officer and IC informed.</p> <p>If aircraft is dispatched: Consider/Initiate a TFR</p> <p>Primary notifications: FS South Zone Duty Officer Richfield Interagency Fire Center (435) 896-8404 Juab County Dispatch (435) 623-1344 have them notify the County Fire Warden FS Patrol Captain Marty Budzynski (435) 671-1694 or acting, if a threat to FS land</p>
-------------------	---

DISPATCH LEVEL	LOW	MODERATE	HIGH
RESOURCES (Minimum)	•Contact Duty Officer	•1 Resource- Engine or IA Squad	•2 Resources- Engines or IA Squads •1 Helicopter

Primary Initial Attack Frequencies				
Frequency Type	Frequency Name	Receive	Transmit	Tone
Command 1	FS Teat Mtn.	172.3750	164.8750	136.5
Command 2	FS Horseshoe	172.3750	164.8750	156.7

ZONE 27

Mount Nebo Wilderness (FS land)

FDRA: 479 (Wasatch)

Follow these procedures in the order listed

PROCEDURES	<p>**Contact <u>Richfield Interagency Fire Center</u> to coordinate the response. -Ensure aviation dispatched has assigned air frequencies are coordinated between Richfield Interagency Fire Center and NUIFC.</p> <p><i>If report meets discretionary criteria call appropriate Duty Officer to determine response (Reference p.1)</i></p> <p>Dispatch closest forces based on current dispatch level - See table below for number and type of resources to be dispatched.</p> <p>Suggested closest resources (these are only suggestions to help the dispatcher get started): FS IA Squad (Spanish Fork) FS Prevention (Spanish Fork) FS Engine (Spanish Fork) BLM Helicopter (Tooele)</p> <p>**Fire is in the wilderness area, contact the FS South Zone Duty Officer to advise.</p> <p>If aircraft is dispatched: Consider/Initiate a TFR If in USFS wilderness, helicopter recon only</p> <p>Primary notifications: FS South Zone Duty Officer Richfield Interagency Fire Center (435) 896-8404 FS Patrol Captain Marty Budzynski (435) 671-1694 or acting, if a threat to FS land</p> <p>Other notifications (as warranted): Juab County Warden</p>
-------------------	---

DISPATCH LEVEL	LOW	MODERATE	HIGH
RESOURCES (Minimum)	<ul style="list-style-type: none"> •Contact Duty Officer 	<ul style="list-style-type: none"> •1 Resource - Engine or IA Squad 	<ul style="list-style-type: none"> •2 Resources - Engines or IA Squads • 1 Helicopter (Recon only)

Primary Initial Attack Frequencies				
Frequency Type	Frequency Name	Receive	Transmit	Tone
Command 1	FS Lake Mtn.	172.3750	164.8750	131.8
Command 2	BLM West Mtn	173.6750	164.7750	156.7

ZONE 28

**Urban Interface (Utah County, Private and State)
FDRA: 478 (Desert)**

Follow these procedures in the order listed

PROCEDURES	<p>Dispatch closest forces based on current dispatch level - See table below for number and type of resources to be dispatched.</p> <p><i>If report meets discretionary criteria call appropriate Duty Officer to determine response (Reference p.1)</i></p> <p>Suggested closest resources (these are only suggestions to help the dispatcher get started):</p> <ul style="list-style-type: none"> FS IA Squad (Spanish Fork) FS Engine (Pleasant Grove) FS Engine (Spanish Fork) BLM Helicopter (Tooele) Utah County Engine Utah County IA Squad <p>If aircraft is dispatched: Consider/Initiate a TFR</p> <p>*If fire is on state, county or private lands the use of additional aviation resources will be authorized by: State Wasatch Front Area Duty Officer and/or Fire Warden.</p> <p>Primary notifications:</p> <ul style="list-style-type: none"> Utah Valley Dispatch (801) 794-3970 State Wasatch Front Duty Officer Utah County Fire Warden <p>Other notifications (as warranted):</p> <ul style="list-style-type: none"> FS South Zone Duty Officer BLM Duty Officer FS Patrol Captain Marty Budzynski (435) 671-1694 or acting, if a threat to FS land
-------------------	---

DISPATCH LEVEL	LOW	MODERATE	HIGH
RESOURCES (Minimum)	<ul style="list-style-type: none"> •2 Engines 	<ul style="list-style-type: none"> •2 Engines •1 IA Squad •1 Helicopter 	<ul style="list-style-type: none"> •3 Engines •1 IA Squad •1 Helicopter • ATGS

Primary Initial Attack Frequencies				
Frequency Type	Frequency Name	Receive	Transmit	Tone
Command 1	FS Lake Mtn	172.3750	164.8750	131.8
Command 2	BLM West Mtn	173.6750	164.7750	156.7

ZONE 29
American Fork Canyon, Tibble Fork, Sundance Area
FDRA: 479 (Wasatch)

Follow these procedures in the order listed

PROCEDURES	<p>Dispatch closest forces based on current dispatch level - See table below for number and type of resources to be dispatched.</p> <p><i>If report meets discretionary criteria call appropriate Duty Officer to determine response (Reference p.1)</i></p> <p>Suggested closest resources (these are only suggestions to help the dispatcher get started): FS Engine (Pleasant Grove) FS IA Squad (Spanish Fork) BLM Helicopter (Tooele) FS Engine (Spanish Fork) FS Engine (Heber) Utah County Engine Utah County IA Squad</p> <p>FS Ownership, verify default initial response on Red/Green map. Ensure Duty Officer and IC informed.</p> <p>If aircraft is dispatched: Consider/Initiate a TFR.</p> <p>*If fire is on state, county or private lands the use of additional aviation resources will be authorized by: State Wasatch Front Area Duty Officer and/or Fire Warden</p> <p>Primary notifications: FS South Zone Duty Officer (prompt for information officer) State Wasatch Front Area Duty Officer Utah County Fire Warden Utah Valley Dispatch (801) 794-3970 FS Patrol Captain Marty Budzynski (435) 671-1694 or acting, if a threat to FS land</p> <p>Other notifications (as warranted) Park Service FMO: Greg Martin (435) 668-9625 (if near Timp. Cave Monument boundary) Timpanogos Cave NM Superintendent Jim Ireland (801) 692-5041 or (907) 491-1373</p>
-------------------	--

DISPATCH LEVEL	LOW	MODERATE	HIGH
RESOURCES (Minimum)	<ul style="list-style-type: none"> •1 Resource- Engine or IA Squad 	<ul style="list-style-type: none"> •2 Resources- Engines or IA Squads 	<ul style="list-style-type: none"> •3 Resources- Engines or IA Squads •1 Helicopter

Primary Initial Attack Frequencies				
Frequency Type	Frequency Name	Receive	Transmit	Tone
Command 1	FS Lake Mtn.	172.3750	164.8250	131.8
Command 2	FS American Fork Cyn	172.3750	164.8750	123.0
Command 3	FS Clayton Peak	172.3750	164.8750	110.9
Command 4	ST Hidden Peak	151.145	159.300	151.4

ZONE 30

Mount Timpanogos Wilderness (FS land)
FDRA: 479 (Wasatch)

Follow these procedures in the order listed

PROCEDURES	<p>Dispatch closest forces based on current dispatch level - See table below for number and type of resources to be dispatched.</p> <p><i>If report meets discretionary criteria call appropriate Duty Officer to determine response (Reference p.1)</i></p> <p>Suggested closest resources (these are only suggestions to help the dispatcher get started): FS IA Squad (Spanish Fork) FS Engine (Pleasant Grove) FS Engine (Spanish Fork) BLM Helicopter (Tooele) Prevention (Pleasant Grove)</p> <p>FS Ownership, verify default initial response on Red/Green map. Ensure Duty Officer and IC informed.</p> <p>If aircraft is dispatched: Consider/Initiate a TFR USFS wilderness, helicopter recon only</p> <p>Primary notifications: FS South Zone Duty Officer State Wasatch Front Area Duty Officer Utah County Warden Utah Valley Dispatch (801) 794-3970 FS Patrol Captain Marty Budzynski (435) 671-1694 or acting, if a threat to FS land</p>
-------------------	---

DISPATCH LEVEL	LOW	MODERATE	HIGH
RESOURCES (Minimum)	<ul style="list-style-type: none"> • Contact Duty Officer 	<ul style="list-style-type: none"> • 1 Resource- Engine or IA Squad 	<ul style="list-style-type: none"> • 1 Resource- Engine or IA Squad • 1 Helicopter (Recon only)

Primary Initial Attack Frequencies				
Frequency Type	Frequency Name	Receive	Transmit	Tone
Command 1	FS Lake Mtn.	172.3750	164.8250	131.8
Command 2	BLM West Mtn	173.6750	164.7750	156.7
Command 3	FS Clayton Peak	172.3750	164.8750	110.9

ZONE 31

Cascade Springs (USFS, Wasatch County, State and Private Lands) FDRA: 479 (Wasatch)

Follow these procedures in the order listed

PROCEDURES	<p>Dispatch closest forces based on current dispatch level - See table below for number and type of resources to be dispatched.</p> <p><i>If report meets discretionary criteria call appropriate Duty Officer to determine response (Reference p.1)</i></p> <p>Suggested closest resources (these are only suggestions to help the dispatcher get started):</p> <ul style="list-style-type: none"> Wasatch County Fire Warden FS Engine (Heber) FS IA Squad (Spanish Fork) FS Engine (Pleasant Grove) Prevention (Heber) Prevention (Pleasant Grove) <p>FS Ownership, verify default initial response on Red/Green map. Ensure Duty Officer and IC informed.</p> <p>If aircraft is dispatched: Consider/Initiate a TFR</p> <p>*If fire is on state, county or private lands the use of additional aviation resources will be authorized by: State Northeast Area Duty Officer.</p> <p>Primary notifications:</p> <ul style="list-style-type: none"> FS South Zone Duty Officer State Northeast Area Duty Officer -State Northeast Area Duty Officer will notify Wasatch State Park FS Patrol Captain Marty Budzynski (435) 671-1694 or acting, if a threat to FS land Wasatch County Dispatch (435) 654-1411 Wasatch County Warden <p>Other notifications (as warranted):</p>
-------------------	---

DISPATCH LEVEL	LOW	MODERATE	HIGH
RESOURCES (Minimum)	•Contact Duty Officer	•1 Resource- Engine or IA Squad	•3 Resources- Engines or IA squads

Primary Initial Attack Frequencies				
Frequency Type	Frequency Name	Receive	Transmit	Tone
Command 1	FS Clayton Peak	172.3750	164.8750	110.9
Command 2	FS Currant Creek (Net3)	172.4000	164.8250	146.2
Command 3	ST Hidden Peak	151.1450	159.3000	151.4

ZONE 32

Southern Lone Peak Wilderness (FS land)
FDRA: 479 (Wasatch)

Follow these procedures in the order listed

PROCEDURES	<p>Dispatch closest forces based on current dispatch level - See table below for number and type of resources to be dispatched.</p> <p><i>If report meets discretionary criteria call appropriate Duty Officer to determine response (Reference p.1)</i></p> <p>Suggested closest resources (these are only suggestions to help the dispatcher get started):</p> <ul style="list-style-type: none"> FS IA Squad (Spanish Fork) FS Engine (Pleasant Grove) Utah County Engine Utah County IA Squad BLM Helicopter (Tooele) Prevention (Pleasant Grove) <p>FS Ownership, verify default initial response on Red/Green map. Ensure Duty Officer and IC informed.</p> <p>If aircraft is dispatched:</p> <ul style="list-style-type: none"> Consider/Initiate a TFR USFS wilderness, helicopter recon only <p>Primary notifications:</p> <ul style="list-style-type: none"> FS South Zone Duty Officer State Wasatch Front Area Duty Officer Utah County Fire Warden FS Patrol Captain Marty Budzynski (435) 671-1694 or acting Utah Valley Dispatch (801) 794-3970 (courtesy call) <p>Other notifications (as warranted):</p>
-------------------	---

DISPATCH LEVEL	LOW	MODERATE	HIGH
RESOURCES (Minimum)	<ul style="list-style-type: none"> • Call Duty Officer 	<ul style="list-style-type: none"> • 1 Resource- Engine or IA Squad 	<ul style="list-style-type: none"> • 2 Resources- Engines or IA Squads • 1 Helicopter (Recon only)

Primary Initial Attack Frequencies				
Frequency Type	Frequency Name	Receive	Transmit	Tone
Command 1	FS Lake Mtn.	172.3750	164.8750	131.8
Command 2	FS Fairmont	173.7750	164.9375	110.9

ZONE 33

Northern Lone Peak and Twin Peaks Wilderness' (FS land)
FDRA: 479 (Wasatch)

Follow these procedures in the order listed

PROCEDURES	<p>Dispatch closest forces based on current dispatch level - See table below for number and type of resources to be dispatched.</p> <p><i>If report meets discretionary criteria call appropriate Duty Officer to determine response (Reference p.1)</i></p> <p>Suggested closest resources (these are only suggestions to help the dispatcher get started): FS Engine (Salt Lake) BLM Helicopter (Tooele) Prevention (Salt Lake)</p> <p>FS Ownership, verify default initial response on Red/Green map. Ensure Duty Officer and IC informed.</p> <p>If aircraft is dispatched: Consider/Initiate a TFR USFS wilderness, helicopter recon only</p> <p>Primary notifications: FS South Zone Duty Officer State Wasatch Front Area Duty Officer Salt Lake County Warden SLC Watershed Department (801) 483-6889 or Jeff Snelling (801) 483-6700 (24 Hour) Valley Emergency Coordination Center (801) 840-4061 FS Patrol Captain Marty Budzynski (435) 671-1694 or acting</p>
-------------------	---

DISPATCH LEVEL	LOW	MODERATE	HIGH
RESOURCES (Minimum)	Call Duty Officer	• 1 Resource- Engine or IA Squad	• 2 Resources- Engines or IA Squads • 1 Helicopter (Recon only)

Primary Initial Attack Frequencies				
Frequency Type	Frequency Name	Receive	Transmit	Tone
Command 1	FS Clayton Pk	172.3750	164.8750	110.9
Command 2	FS Fairmont	173.7750	164.9375	110.9
Command 3	FS Scotts Pk (Net 3)	172.4000	164.8250	110.9
Command 4	FS Mill Creek	173.7750	164.9375	123.0

ZONE 34

Wasatch Blvd., East to Summit County Line
FDRA: 479 (Wasatch)

Follow these procedures in the order listed

PROCEDURES	<p>Dispatch closest forces based on current dispatch level - See table below for number and type of resources to be dispatched.</p> <p><i>If report meets discretionary criteria call appropriate Duty Officer to determine response (Reference p.1)</i></p> <p>If fire is adjacent to the wilderness area, notify the FS North Zone Duty Officer.</p> <p>Suggested closest resources (these are only suggestions to help the dispatcher get started):</p> <ul style="list-style-type: none"> FS Engine (Salt Lake) South Weber Engine NWS Engine (Salt Lake) FS Helicopter (Mt. Green) <p>FS Ownership, verify default initial response on Red/Green map. Ensure Duty Officer and IC informed.</p> <p>If aircraft is dispatched: Consider/Initiate a TFR</p> <p>*If fire is on state, county or private lands the use of additional aviation resources will be authorized by: State Wasatch Front Area Duty Officer, Salt Lake County Warden and/or UFA Wildland Duty Officer.</p> <p>Primary notifications:</p> <ul style="list-style-type: none"> FS South Zone Duty Officer State Wasatch Front and Northeast Area Duty Officer Salt Lake County Warden SLC Watershed Department (801) 483-6889 or Jeff Snelling (801) 483-6700 (24 Hour) Valley Emergency Coordination Center (801) 840-4061 FS Patrol Captain Marty Budzynski (435) 671-1694 or acting, if a threat to FS land
-------------------	--

DISPATCH LEVEL	LOW	MODERATE	HIGH
RESOURCES (Minimum)	<ul style="list-style-type: none"> •1 Engine •1 IA Squad 	<ul style="list-style-type: none"> •2 Engines •1 IA Squad •1 Helicopter •ATGS •2SEATS 	<ul style="list-style-type: none"> •3 Engines •2 IA Squads •1 Helicopter •ATGS •2 SEATs

Primary Initial Attack Frequencies				
Frequency Type	Frequency Name	Receive	Transmit	Tone
Command 1	FS Fairmont Peak	173.7750	164.9375	110.9
Command 2	FS Scotts Peak	173.7750	164.9375	131.8
Command 3	FS Mill Creek	173.7750	164.9375	123.0
Command 4	FS Clayton	172.3750	164.8750	110.9

ZONE 35

Salt Lake County, Salt Lake City—West of Wasatch Blvd
FDRA: 478 (Desert)

Follow these procedures in the order listed

PROCEDURES	<p>Dispatch closest forces based on current dispatch level - See table below for number and type of resources to be dispatched.</p> <p><i>If report meets discretionary criteria call appropriate Duty Officer to determine response (Reference p.1)</i></p> <p>***IF WITHIN ½ MILE OF FS BOUNDARY OR ON FS LAND: (Use Run Card 34)</p> <p>Suggested closest resources (these are only suggestions to help the dispatcher get started): Unified Fire Authority</p> <p>If UFA requests assistance: FS Engine (Salt Lake) South Weber Engine NWS Engine (Salt Lake)</p> <p>If threatening or on Camp Williams Army National Guard Base: Camp Williams Range Control (801) 878-5421</p> <p>If aircraft is dispatched: <b style="color: red;">If aircraft is ordered, an ATGS is required or must be ordered to continue using other aircraft. Consider/Initiate a TFR <b style="color: red;">*If fire is on state, county or private lands the use of additional aviation resources will be authorized by: State Wasatch Front Area Duty Officer, Salt Lake County Fire Warden or UFA Wildland Duty Officer.</p> <p>Primary notifications: State Wasatch Front Area Duty Officer Salt Lake County Warden Valley Emergency Coordination Center (801) 840-4061</p> <p>Other notifications (as warranted): FS South Zone Duty Officer BLM Duty Officer Utah Valley Dispatch (801) 794-3970 (if on Traverse Ridge) <b style="color: red;">**For fires on the border between Utah and Salt Lake Counties, contact Utah Valley Dispatch (801) 794-3970 FS Patrol Captain Marty Budzynski (435) 671-1694 or acting, if a threat to FS land</p>
-------------------	---

DISPATCH LEVEL	LOW	MODERATE	HIGH
RESOURCES (Minimum)	Contact DO	Contact DO	Contact DO

Primary Initial Attack Frequencies				
Frequency Type	Frequency Name	Receive	Transmit	Tone
Command 1	FS Fairmont	173.7750	164.9375	110.9
Command 2	ST Lake Mtn	151.3700	159.4050	151.4
Command 3	BLM Francis	173.6750	164.7750	167.9

ZONE 36

Utah County (Camp Williams—Dept. of Defense ownership)
FDRA: 478 (Desert)

Follow these procedures in the order listed

PROCEDURES	<p>NO CIVILIAN ADMITTANCE</p> <p>Contact Camp Williams to determine if fire report may be the result of ordnances or firing activity. If confirmed as a wildfire on DOD land, obtain size-up information for primary notifications.</p> <p><i>If report meets discretionary criteria call appropriate Duty Officer to determine response (Reference p.1)</i></p> <p>*NO resources will be dispatched to this area unless authorized by agency Duty Officer.</p> <p>If aircraft is dispatched: Consider/Initiate a TFR</p> <p>*If fire is on state, county or private lands the use of additional aviation resources will be authorized by: State Wasatch Front Area Duty Officer and/or delegated representative UFA Wildland Duty Officer.</p> <p>*NON-MILITARY FIRE PERSONNEL SHALL <u>NOT</u> ENTER CAMP WILLIAMS UNLESS REQUESTED BY CAMP WILLIAMS.</p> <p>Any non-military resources responding to wildfires must report to Camp Williams designated staging areas and enter through the main gate.</p> <p>Primary notifications: Unified Fire Authority (801) 840-4061 or 4062 State Wasatch Front Area Duty Officer Camp Williams Range Control (801) 878-5421 Camp Williams Fire contact: Jon Slatore 801-450-4030 Valley Emergency Communications Center</p> <p>Other notifications (as warranted): BLM Duty Officer Utah Valley Dispatch (801) 794-3970 Utah County Fire Warden Valley Emergency Coordination Center (801) 840-4061 Salt Lake County Warden</p>
-------------------	--

DISPATCH LEVEL	LOW	MODERATE	HIGH
RESOURCES (Minimum)	• As Requested by Camp Williams	• As Requested by Camp Williams	• As Requested by Camp Williams

Primary Initial Attack Frequencies				
Frequency Type	Frequency Name	Receive	Transmit	Tone
Command 1	FS Lake Mtn.	172.3750	164.8750	131.8
Command 2	FS Fairmont	173.7750	164.9375	110.9
Camp Williams Victor	Camp Williams Victor	126.200	126.200	
Camp Williams Air-to-Ground	Camp Williams A/G	141.1250	143.100	146.2

ZONE 37
Utah County (Cedar Fort, Eagle Mountain, Fairfield)
FDRA: 478 (Desert)

Follow these procedures in the order listed

PROCEDURES	<p>Dispatch closest forces based on current dispatch level – See table below for number and type of resources to be dispatched.</p> <p><i>If report meets discretionary criteria call appropriate Duty Officer to determine response (Reference p.1)</i></p> <p>Suggested closest resources (these are only suggestions to help the dispatcher get started): BLM Vernon Fire Station Utah County Engines FS Engine (Pleasant Grove) BLM Helicopter (Tooele) BLM Water Tender</p> <p>If aircraft is dispatched: Consider/Initiate a TFR.</p> <p>*If fire is on state, county or private lands the use of additional aviation resources will be authorized by: State Wasatch Front Area Duty Officer and/or Fire Warden.</p> <p>Primary Notifications: Utah Valley Dispatch (801) 794-3970 (if this is a county fire they will dispatch county resources) State Wasatch Front Area Duty Officer Utah County Fire Warden</p> <p>Other notifications (as warranted): BLM Duty Officer Camp Williams Fire contact: Jon Slatore 801-450-4030, (if fire is bordering on North side of Zone 36)</p>
-------------------	---

DISPATCH LEVEL	LOW	MODERATE	HIGH
RESOURCES (Minimum)	<ul style="list-style-type: none"> • 1 Engine 	<ul style="list-style-type: none"> • 2 Engines • 1 Water Tender • Helicopter • ATGS 	<ul style="list-style-type: none"> • 2 Engines • 1 Water Tender • Helicopter • ATGS

Primary Initial Attack Frequencies				
Frequency Type	Frequency Name	Receive	Transmit	Tone
Command 1	FS Lake Mtn.	172.3750	164.8750	131.8
Command 2	BLM West Mountain	173.6750	164.7750	156.7

ZONE 38

Utah County (Lake Mountains, West Mountain, SE Oquirrh Mtns.)
FDRA: 478 (Desert)

Follow these procedures in the order listed

PROCEDURES	<p>Dispatch closest forces based on current dispatch level - See table below for number and type of resources to be dispatched.</p> <p><i>If report meets discretionary criteria call appropriate Duty Officer to determine response (Reference p.1)</i></p> <p>Suggested closest resources (these are only suggestions to help the dispatcher get started):</p> <ul style="list-style-type: none"> BLM Vernon Fire Station BLM Water Tender Utah County Engines FS Engine (Pleasant Grove) FS Engine (Spanish Fork) BLM Helicopter (Tooele) <p>If aircraft is dispatched: Consider/Initiate a TFR</p> <p>*If fire is on state, county or private lands the use of additional aviation resources will be authorized by: State Wasatch Front Area Duty Officer and/or Fire Warden.</p> <p>Primary notifications:</p> <ul style="list-style-type: none"> BLM Duty Officer Utah Valley Dispatch (801) 794-3970 (if this is a county fire they will dispatch county resources) State Wasatch Front Area Duty Officer Utah County Fire Warden <p>Other notifications (as warranted):</p> <ul style="list-style-type: none"> Camp Williams Fire contact: Jon Slatore 801-450-4030 (if fire is bordering on North side of Zone 35) Richfield Interagency Fire Center (435) 896-8404 (courtesy call)
-------------------	---

DISPATCH LEVEL	LOW	MODERATE	HIGH
RESOURCES (Minimum)	<ul style="list-style-type: none"> •2 Engines 	<ul style="list-style-type: none"> •2 Engines •1 Water Tender •1 Dozer •ATGS •1 Helicopter •2 SEAT 	<ul style="list-style-type: none"> •3 Engines •1 Water Tender •1 Dozer •ATGS •1 Helicopter •2 SEATS

Primary Initial Attack Frequencies				
Frequency Type	Frequency Name	Receive	Transmit	Tone
Command 1	BLM West Mtn.	173.675	164.775	156.7
Command 2	FS Lake Mtn.	172.3750	164.8750	131.8

ZONE 39

Tooele County (S Skull Valley, Rush Valley, Onaqui Mts., Dugway Range, Simpson Mts., SW Oquirrh Mts.)
FDRA: 478 (Desert)

Follow these procedures in the order listed

PROCEDURES	<p>Dispatch closest forces based on current dispatch level - See table below for number and type of resources to be dispatched.</p> <p><i>If report meets discretionary criteria call appropriate Duty Officer to determine response (Reference p.1)</i></p> <p style="color: red;">All attempts will be made to assign a Resource Advisor (READ) on BLM/Federal ownership due to Sage Grouse area primarily in Sheeprock Mountains.</p> <p>Suggested closest resources (these are only suggestions to help the dispatcher get started):</p> <ul style="list-style-type: none"> BLM Vernon Fire Station BLM Water Tender Tooele County Fire Warden BLM Helicopter (Tooele) BLM Muskrat Fire Station <p>If report is close to <u>Zone 42</u> boundary: Request resources from both Vernon and Muskrat BLM stations</p> <p>If aircraft is dispatched: Consider/Initiate a TFR</p> <p style="color: red;">*If fire is on state, county or private lands the use of additional aviation resources will be authorized by: State Wasatch Front Area Duty Officer and/or Fire Warden.</p> <p>Primary notifications:</p> <ul style="list-style-type: none"> BLM Duty Officer State Wasatch Front Area Duty Officer <p>Other notifications (as warranted):</p> <ul style="list-style-type: none"> Utah Valley Dispatch (801) 794-3970 Utah County Warden Tooele County Dispatch (435) 882-5600 Tooele County Fire Warden Richfield Interagency Fire Center (435) 896-8404 (if near boundary) Clover Control (801) 777-4390 / 7575 / 7576 (if aircraft is dispatched) Desert Chemical (if adjacent to ordinance depot) FS South Zone Duty Officer Dugway Proving Grounds – Fire Dept (if adjacent to Dept of Defense ownership) <p style="color: red;">Note: Use of the water at the Terra Reservoir must be cleared through the water commission.</p> <p>Water Master : Daniel Antrey - Interim: (435) 849-1768 or Gerry Neil - Terra Fire Chief: (435) 830-8347</p>
-------------------	---

DISPATCH LEVEL	LOW	MODERATE	HIGH
RESOURCES (Minimum)	<ul style="list-style-type: none"> •1 Engine 	<ul style="list-style-type: none"> •2 Engines •1 Water Tender •1 Dozer •1 Helicopter • ATGS 	<ul style="list-style-type: none"> •3 Engines •1 Water Tender •1 Dozer • 1 Helicopter •ATGS •2 SEATs

Primary Initial Attack Frequencies				
Frequency Type	Frequency Name	Receive	Transmit	Tone
Command 1	BLM Black Crook	173.6750	164.7750	110.9
Command 2	FS Vernon	172.3750	164.8750	167.9
Command 3	FS Fairmont Peak	173.7750	164.9375	110.9

ZONE 40
Tooele County (Sheeprock Mountains – USFS ownership)
FDRA: 478 (Desert)

Follow these procedures in the order listed

PROCEDURES	<p>Dispatch closest forces based on current dispatch level - See table below for number and type of resources to be dispatched.</p> <p><i>If report meets discretionary criteria call appropriate Duty Officer to determine response (Reference p.1)</i></p> <p>Suggested closest resources (these are only suggestions to help the dispatcher get started):</p> <ul style="list-style-type: none"> BLM Vernon Fire Station BLM Muskrat Fire Station BLM Water Tender Tooele County Fire Warden FS Engine (Pleasant Grove) FS Engine (Spanish Fork) FS IA Squad (Spanish Fork) BLM Helicopter (Tooele) <p>FS ownership, verify default initial response on Red/Green map. Ensure Duty Officer and IC informed.</p> <p>If aircraft is dispatched: Consider/Initiate a TFR</p> <p>*If fire is on state, county or private lands the use of additional aviation resources will be authorized by: State Wasatch Front Area Duty Officer and/or Fire Warden.</p> <p>Primary notifications:</p> <ul style="list-style-type: none"> FS South Zone Duty Officer (prompt for USFS Resource Advisor) BLM Duty Officer State Wasatch Front Area Duty Officer Tooele County Fire Warden Tooele County Dispatch (435) 882-5600 FS Patrol Captain Marty Budzynski (435) 671-1694 or acting, if a threat to FS land <p>Other notifications (as warranted):</p> <ul style="list-style-type: none"> Richfield Interagency Fire Center (435) 896-8404 Clover Control (801) 777-4390 / 7575 / 7576 (if aircraft is dispatched)
-------------------	---

DISPATCH LEVEL	LOW	MODERATE	HIGH
RESOURCE (Minimum)	<ul style="list-style-type: none"> • Contact Duty Officer 	<ul style="list-style-type: none"> • 2 Resources- Engines or IA Squads • 1 Water Tender 	<ul style="list-style-type: none"> • 3 Resources- Engines or IA Squads • 1 Water Tender • 1 Helicopter

Primary Initial Attack Frequencies				
Frequency Type	Frequency Name	Receive	Transmit	Tone
Command 1	FS Vernon	172.3750	164.8750	167.9
Command 2	BLM Black Crook	173.6750	164.7750	110.9

ZONE 41

**Tooele County (Deseret Chemical Depot – Dept of Defense Ownership)
FDRA: 478 (Desert)**

Follow these procedures in the order listed

PROCEDURES	<p>NO CIVILIAN ADMITTANCE</p> <p><i>If report meets discretionary criteria call appropriate Duty Officer to determine response (Reference p.1)</i></p> <p>Contact Deseret Chemical Depot to determine if fire report may be the result of ordinance or firing activity. If confirmed as a wildfire on DOD land, obtain size-up information for primary notifications.</p> <p>No resources will be used on Deseret Chemical Depot ownership; resources can respond to assist with suppression efforts adjacent to (but not on) Deseret Chemical Depot.</p> <p>Primary notifications: BLM Duty Officer Tooele County Dispatch (435) 882-5600 Tooele County Fire Warden State Wasatch Front Area Duty Officer Clover Control (801) 777-4390 / 7575 / 7576</p>
-------------------	--

DISPATCH LEVEL	LOW	MODERATE	HIGH
RESOURCES (Minimum)	*The BLM & State Duty Officer will determine appropriate default initial response (if needed).		

Primary Initial Attack Frequencies				
Frequency Type	Frequency Name	Receive	Transmit	Tone
Command 1	BLM Black Crook	173.675	164.775	110.9
Command 2	FS Vernon	172.3750	164.8750	167.9

ZONE 42

**Tooele County (Tooele Army Depot – Dept of Defense Ownership)
FDRA: 478 (Desert)**

Follow these procedures in the order listed

PROCEDURES	<p>NO CIVILIAN ADMITTANCE</p> <p><i>If report meets discretionary criteria call appropriate Duty Officer to determine response (Reference p.1)</i></p> <p>Contact Tooele Army Depot to determine if fire report may be the result of ordinances or firing activity. If confirmed as a wildfire on DOD land, obtain size-up information for primary notifications.</p> <p>No resources will be dispatched to this zone except as requested by Tooele Army Depot and approved by agency Duty Officer; resources can respond to assist with suppression efforts adjacent to (but not on) Tooele Army Depot.</p> <p>Primary notifications: BLM Duty Officer Tooele County Dispatch (435) 882-5600 Tooele County Fire Warden State Wasatch Front Area Duty Officer Clover Control (801) 777-4390 / 7575 / 7576</p>
-------------------	---

DISPATCH LEVEL	LOW	MODERATE	HIGH
RESOURCES (Minimum)	*The BLM & State Duty Officer will determine appropriate default initial response (if needed).		

Primary Initial Attack Frequencies				
Frequency Type	Frequency Name	Receive	Transmit	Tone
Command 1	BLM Black Crook	173.675	164.775	110.9
Command 2	FS Vernon	172.3750	164.8750	167.9

ZONE 43

Tooele County (N Skull Valley, Lakeside Mts., Puddle Valley, Stansbury Island, Grantsville, NW Oquirrh Mts.)
FDRA: 478 (Desert)

Follow these procedures in the order listed

PROCEDURES	<p>Dispatch closest forces based on current dispatch level - See table below for number and type of resources to be dispatched.</p> <p><i>If report meets discretionary criteria call appropriate Duty Officer to determine response (Reference p.1)</i></p> <p>Suggested closest resources (these are only suggestions to help the dispatcher get started):</p> <ul style="list-style-type: none"> BLM Muskrat Fire Station BLM Water Tender Tooele County Fire Warden BLM Helicopter (Tooele) FS Salt Lake Engine <p>If report is close to <u>Zone 38</u> boundary:</p> <p style="padding-left: 20px;">Request resources from both Vernon and Muskrat BLM stations</p> <p>If aircraft is dispatched:</p> <p style="padding-left: 20px;">Consider/Initiate a TFR</p> <p>*If fire is on state, county or private lands the use of additional aviation resources will be authorized by: State Wasatch Front Area Duty Officer and/or Fire Warden.</p> <p>Primary notifications:</p> <ul style="list-style-type: none"> BLM Duty Officer Tooele County Dispatch (435) 882-5600 Tooele County Fire Warden State Wasatch Front Area Duty Officer <p>Other notifications as warranted:</p> <ul style="list-style-type: none"> Clover Control (801) 777-4390 / 7575 / 7576 (if aircraft is dispatched) Lakeside Bombing Range (if adjacent to Dept. of Defense ownership) Bear River Area Duty Officer Skull Valley Goshute Tribal Council (if adjacent to Tribal ownership) BIA FMO (if adjacent to Tribal ownership) Dugway Proving Grounds – Fire Dept. (if adjacent to Dept. of Defense ownership) FS South Zone Duty Officer (if adjacent to USFS ownership) FS Patrol Captain Marty Budzynski (435) 671-1694 or acting, if a threat to FS land <p>Note: Use of the water at the Terra Reservoir must be cleared through the water commission.</p> <p>Water Master : Daniel Antrey - Interim: (435) 849-1768 or Gerry Neil - Terra Fire Chief: (435) 830-8347</p>
-------------------	--

DISPATCH LEVEL	LOW	MODERATE	HIGH
RESOURCES (Minimum)	<ul style="list-style-type: none"> •1 Engine 	<ul style="list-style-type: none"> • 2 Engines • 1 Helicopter • 1 Water Tender • 1 Dozer 	<ul style="list-style-type: none"> •3 Engines •1 Water Tender • 1 Dozer •1 Helicopter •ATGS •2 SEATs

Suggested Initial Attack Frequencies				
Frequency Type	Frequency Name	Receive	Transmit	Tone
Command 1	BLM Delle	170.5125	163.0250	136.5
Command 2	FS Fairmont Peak	173.7750	164.9375	110.9
Command 3	BLM Francis	173.6750	164.7750	167.9

ZONE 44

Tooele County (Lakeside Mts., Puddle Valley, Designated Hazard Area for US Magnesium)
FDRA: 478 (Desert)

Follow these procedures in the order listed

PROCEDURES	<p>Dispatch closest forces based on current dispatch level - See table below for number and type of resources to be dispatched and ensure a briefing concerning the hazard area has occurred.</p> <p><i>If report meets discretionary criteria call appropriate Duty Officer to determine response (Reference p.1)</i></p> <p>Suggested closest resources (these are only suggestions to help the dispatcher get started):</p> <ul style="list-style-type: none">BLM Muskrat Fire StationBLM Water TenderBLM Salt Lake HelitackTooele County Fire Warden <p>Advised Hazard Notification and Special Considerations:</p> <ul style="list-style-type: none">• There is a No Fly restriction within the 5 mile radius of US Magnesium facility located on the western shore of the Great Salt Lake, and East of the Lakeside Mountain range.• No Federal Ground personnel will enter the 5 mile area at any time. State and local resources will utilize the designated GO/No-Go checklist that has been developed for the No Fly Zone. (Contact Duty Officer or Dispatch).• Aircraft can be dispatched if ordered by the on scene IC and operations are being conducted outside of the identified 5 mile no fly zone. Upon notification and request of the Jurisdictional Duty Officer, Aviation Resources can be dispatched fires outside of the No Fly Zone simultaneously to the activation of the designated Run Card response.• A SPOT Weather Forecast should be initiated for all fires within the Five mile Circle, and the IC should request a SPOT at earliest possible time for action within the run card zone (Cedar Mountain RAWS). <p>**5NM circle is off that smoke stack at US Mag. Let/long of the smoke stack is: 40° 54.9 x 112° 44.0</p> <p>If aircraft is dispatched: Consider/Initiate a TFR</p> <p>*If fire is on state, county or private lands the use of additional aviation resources will be authorized by: State Wasatch Front Area Duty Officer and/or Fire Warden.</p> <p>Primary notifications:</p> <ul style="list-style-type: none">BLM Duty OfficerTooele County Dispatch (435) 882-5600Tooele County Fire WardenState Wasatch Front Area Duty OfficerUS Mag Liaison (XXX-XXX-XXXX) <p>Other notifications as warranted:</p> <ul style="list-style-type: none">Clover Control (801) 777-4390 / 7575 / 7576 (if aircraft is dispatched near UTTR)Lakeside Bombing Range (if adjacent to Dept. of Defense ownership)FS Forest Duty Officer (due to USFS Aircraft/resources potentially being mobilized) <p>Note: Use of the water at the Wasatch Landfill has been pre-approved.</p>
-------------------	---

DISPATCH LEVEL	LOW	MODERATE	HIGH
RESOURCES (Minimum)	<ul style="list-style-type: none"> •1 Engine Contact DO for aircraft 	<ul style="list-style-type: none"> • 2 Engines • 1 Water Tender •1 T3 IC (Jurisdictional DO) Contact DO for aircraft 	<ul style="list-style-type: none"> •3 Engines •1 Water Tender •1 T3 IC (Jurisdictional DO call) Contact DO for aircraft

Suggested Initial Attack Frequencies				
Frequency Type	Frequency Name	Receive	Transmit	Tone
Command 1	BLM Delle	170.5125	163.0250	136.5
Command 2	FS Fairmont Peak	173.7750	164.9375	110.9
Command 3	BLM Francis	173.6750	164.7750	167.9

ZONE 45

**Tooele County (Stansbury Mountains – USFS ownership)
FDRA: 478 (Desert)**

Follow these procedures in the order listed

PROCEDURES	<p>Dispatch closest forces based on current dispatch level - See table below for number and type of resources to be dispatched.</p> <p><i>If report meets discretionary criteria call appropriate Duty Officer to determine response (Reference p.1)</i></p> <p>Suggested closest resources (these are only suggestions to help the dispatcher get started):</p> <ul style="list-style-type: none"> BLM Muskrat Fire Station BLM Water Tender Tooele County Fire Warden FS Engine (Salt Lake) BLM Helicopter (Tooele) <p>FS Ownership, verify default initial response on Red/Green map. Ensure Duty Officer and IC informed.</p> <p>If aircraft is dispatched: Consider/Initiate a TFR</p> <p>Primary notifications:</p> <ul style="list-style-type: none"> FS South Zone Duty Officer (prompt for USFS Resource Advisor) BLM Duty Officer State Wasatch Front Duty Officer Tooele County Dispatch (435) 882-5600 Tooele County Fire Warden FS Patrol Captain Marty Budzynski (435) 671-1694 or acting, if a threat to FS land <p>Other notifications (as warranted):</p> <ul style="list-style-type: none"> Clover Control (801) 777-4390 / 7575 / 7576 (if aircraft is dispatched) Skull Valley Goshute Tribal Council (if near Tribal ownership) <p>Note: Use of the water at the Terra Reservoir must be cleared through the water commission. Water Master : Daniel Antrey - Interim: (435) 849-1768 or Gerry Neil - Terra Fire Chief: (435) 830-8347</p>
-------------------	---

DISPATCH LEVEL	LOW	MODERATE	HIGH
RESOURCES (Minimum)	<ul style="list-style-type: none"> • Contact Duty Officer 	<ul style="list-style-type: none"> • 2 Resources- Engines or IA Squads • 1 Water Tender 	<ul style="list-style-type: none"> • 3 Resources- Engines or IA Squads • 1 Helicopter • 1 Water Tender

Primary Initial Attack Frequencies				
Frequency Type	Frequency Name	Receive	Transmit	Tone
Command 1	BLM Delle	170.5125	163.0250	136.5
Command 2	FS Fairmont	173.7750	164.9375	110.9

ZONE 46

**Tooele County (Deseret Wilderness, Stansbury Mountains – USFS ownership)
FDRA: 478 (Desert)**

Follow these procedures in the order listed

PROCEDURES	<p>Dispatch closest forces based on current dispatch level - See table below for number and type of resources to be dispatched.</p> <p><i>If report meets discretionary criteria call appropriate Duty Officer to determine response (Reference p.1)</i></p> <p>**If fire is on or adjacent to a wilderness area, notify the FS South Zone Duty Officer.</p> <p>Suggested closest resources (these are only suggestions to help the dispatcher get started):</p> <ul style="list-style-type: none"> BLM Muskrat Fire Station BLM Water Tender Tooele County Fire Warden FS Salt Lake Engine BLM Helicopter (Tooele) <p>FS ownership, verify default initial response on Red/Green map. Ensure Duty Officer and IC informed.</p> <p>If aircraft is dispatched: Consider/Initiate a TFR</p> <p>If in USFS wilderness, helicopter recon only</p> <p>**Do NOT use the pond on the Goshute Indian Reservation as a dip site at these coordinates: Latitude: 40 23.9 x Longitude: 112 42.9</p> <p>***Permission must be obtained before entering, crossing, or landing on Tribal Lands from: Skull Valley Goshute Tribal Council at (435) 882-4872, or Don Mitchell, BIA FMO at (435) 724-2593</p> <p>Primary notifications:</p> <ul style="list-style-type: none"> FS South Zone Duty Officer BLM Duty Officer State Wasatch Front Area Duty Officer Tooele County Dispatch (435) 882-5600 Tooele County Fire Warden FS Patrol Captain Marty Budzynski (435) 671-1694 or acting, if a threat to FS land <p>Other notifications (as warranted):</p> <ul style="list-style-type: none"> Clover Control (801) 777-4390 / 7575 / 7576 (if aircraft is dispatched) BIA FMO (if adjacent to Tribal ownership) Skull Valley Goshute Tribal Council (if adjacent to Tribal ownership)
-------------------	--

DISPATCH LEVEL	LOW	MODERATE	HIGH
RESOURCES (Minimum)	<ul style="list-style-type: none"> • Contact Duty Officer 	<ul style="list-style-type: none"> • 1 Resource- Engine or IA Squad 	<ul style="list-style-type: none"> • 2 Resources- Engines or IA Squads • 1 Helicopter (recon only)

Primary Initial Attack Frequencies				
Frequency Type	Frequency Name	Receive	Transmit	Tone
Command 1	BLM Delle	170.5125	163.0250	136.5
Command 2	FS Fairmont	173.7750	164.9375	110.9

ZONE 47
Tooele County (Skull Valley Goshute Indian Reservation)
FDRA: 478 (Desert)

Follow these procedures in the order listed

PROCEDURES	<p>Dispatch closest forces based on current dispatch level - See table below for number and type of resources to be dispatched.</p> <p><i>If report meets discretionary criteria call appropriate Duty Officer to determine response (Reference p.1)</i></p> <p>Suggested closest resources (these are only suggestions to help the dispatcher get started): BLM Muskrat Fire Station BLM Water Tender Tooele County Fire Warden</p> <p>If aircraft is dispatched: Consider/Initiate a TFR</p> <p>**Do <u>NOT</u> use the pond on the Skull Valley Goshute Indian Reservation as a dip site at these coordinates: Latitude: 40 23.9 x Longitude: 112 42.9</p> <p>***Permission must be obtained before entering or crossing Tribal Lands from: Christopher Secakuku, BIA Forest manager at (435) 724-2594, or Skull Valley Goshute Tribal Council at (435) 882-4872</p> <p>* Ground Resources will <u>NOT</u> leave highway until Tribal permission is obtained</p> <p>Primary notifications: BLM Duty Officer State Wasatch Front Area Duty Officer Tooele County Dispatch (435) 882-5600 Tooele County Fire Warden BIA Uintah Basin FMO BIA LEO Ranger</p> <p>Other notifications (as warranted): FS South Zone Duty Officer (if adjacent to USFS ownership) Clover Control (801) 777-4390 / 7575 / 7576 (if aircraft is dispatched) FS Patrol Captain Marty Budzynski (435) 671-1694 or acting, if a threat to FS land</p>
-------------------	--

DISPATCH LEVEL	LOW	MODERATE	HIGH
RESOURCES (Minimum)	<ul style="list-style-type: none"> •1 Engine • LEO 	<ul style="list-style-type: none"> •2 Engines •1 Water Tender •LEO 	<ul style="list-style-type: none"> •3 Engines •1 Water Tender •ATGS •LEO • 1 Dozer

Primary Initial Attack Frequencies				
Frequency Type	Frequency Name	Receive	Transmit	Tone
Command 1	BLM Delle	170.5125	163.0250	136.5
Command 2	BLM Black Crook	173.6750	164.7750	110.9

ZONE 48
Tooele County and Cedar Mountain Wilderness
FDRA: 478 (Desert)

Follow these procedures in the order listed

PROCEDURES	<p>Dispatch closest forces based on current dispatch level - See table below for number and type of resources to be dispatched.</p> <p><i>If report meets discretionary criteria call appropriate Duty Officer to determine response (Reference p.1)</i></p> <p>Suggested closest resources (these are only suggestions to help the dispatcher get started): BLM Muskrat Fire Station BLM Water Tender Tooele County Fire Warden BLM Helicopter (Tooele)</p> <p>If fire is on or adjacent to the wilderness area, notify BLM Duty Officer and prompt for a READ. (Permission is needed from the West Desert District Manager for suppression tactics)</p> <p>If aircraft is dispatched: Consider/Initiate a TFR</p> <p>If fire is on state, county or private lands use of additional aviation resources will be authorized by: State Wasatch Front Area Duty Officer and/or Fire Warden.</p> <p>Primary notifications: BLM Duty Officer Tooele County Dispatch (435) 882-5600 State Wasatch Front Area Duty Officer Tooele County Fire Warden</p> <p>Other notifications as warranted: Clover Control (801) 777-4390 / 7575 / 7576 (if aircraft is dispatched) Lakeside Bombing Range (if adjacent to Dept of Defense ownership) Dugway Proving Grounds – Fire Dept (if adjacent to Dept of Defense ownership)</p> <p>Note: Use of the water at the Terra Reservoir must be cleared through the water commission. Water Master : Daniel Antrey - Interim: (435) 849-1768 or Gerry Neil - Terra Fire Chief: (435) 830-8347</p>
-------------------	--

DISPATCH LEVEL	LOW	MODERATE	HIGH
RESOURCES (Minimum)	•1 Engine	•2 Engines •1 Water Tender •1 Helicopter • ATGS	•2 Engines •1 Water Tender •1 Helicopter •ATGS •2 SEAT

Suggested Initial Attack Frequencies				
Frequency Type	Frequency Name	Receive	Transmit	Tone
Command 1	BLM Delle	170.5125	163.0250	136.5

ZONE 49

**Tooele County (Dugway Proving Grounds – Dept of Defense Ownership)
FDRA: 478 (Desert)**

Follow these procedures in the order listed

PROCEDURES	<p>NO CIVILIAN ADMITTANCE</p> <p><i>If report meets discretionary criteria call appropriate Duty Officer to determine response (Reference p.1)</i></p> <p>Contact Dugway Proving Grounds to determine if fire report may be the result of ordinance or firing activity. If confirmed as a wildfire on DOD land, obtain size-up information for primary notifications.</p> <p>No resources will be dispatched to this area except as requested by Dugway Proving Grounds AND approved by the Agency Duty Officer.</p> <p>Any non-military resources responding must be escorted by a Dugway representative.</p> <p>Primary notifications: BLM Duty Officer Tooele County Dispatch (435) 882-5600 Tooele County Fire Warden State Wasatch Front Area Duty Officer Dugway Fire Chief Clover Control (801) 777-4390 / 7575 / 7576</p> <p>Other notification (as warranted): Richfield Interagency Fire Center (435) 896-8404 (if near southern boundary) Elko Interagency Fire Center (775) 748-4000 (if near western boundary)</p>
-------------------	--

DISPATCH LEVEL	LOW	MODERATE	HIGH
RESOURCES (Minimum)	*The BLM & State Duty Officer will determine appropriate default initial response (if needed).		

Primary Initial Attack Frequencies				
Frequency Type	Frequency Name	Receive	Transmit	Tone
Command 1	BLM Black Crook	173.6750	164.7750	110.9
Command 2	FS Vernon	172.3750	164.8250	167.9
Command 3	BLM Deep Creek	170.5125	163.0250	167.9

ZONE 50
Juab County (Fish Springs Refuge)
FDRA: 478 (Desert)

Follow these procedures in the order listed

PROCEDURES	<p>Dispatch closest forces based on current dispatch level - See table below for number and type of resources to be dispatched.</p> <p><i>If report meets discretionary criteria call appropriate Duty Officer to determine response (Reference p.1)</i></p> <p>Suggested closest resources (these are only suggestions to help the dispatcher get started):</p> <ul style="list-style-type: none"> BLM Vernon Fire Station BLM Water Tender Juab County Fire Warden BLM Helicopter (Tooele) <p>If aircraft is dispatched:</p> <ul style="list-style-type: none"> Consider/Initiate a TFR <p>Primary notifications:</p> <ul style="list-style-type: none"> FWS DO BLM DO Central State Area Duty Officer Richfield Interagency Fire Center (435) 896-8404 Juab County Fire Warden <p>Other notifications (as warranted):</p> <ul style="list-style-type: none"> Clover Control (801) 777-4390 / 7575 / 7576 (if aircraft is dispatched) Dugway Proving Grounds -- Fire Dept (if adjacent to Dept of Defense ownership)
-------------------	--

DISPATCH LEVEL	LOW	MODERATE	HIGH
RESOURCES (Minimum)	<ul style="list-style-type: none"> • 1 Engine 	<ul style="list-style-type: none"> • 2 Engines 	<ul style="list-style-type: none"> • 2 Engines • 1 Helicopter

Primary Initial Attack Frequencies				
Frequency Type	Frequency Name	Receive	Transmit	Tone
Command 1	BLM Deep Creek	170.5125	163.0250	167.9
Command 2	BLM Black Crook	173.6750	164.7750	110.9

ZONE 51

**Tooele County (Deep Creek Mtns., Dutch Mt., Gold Hill)
FDRA: 478 (Desert)**

Follow these procedures in the order listed

PROCEDURES	<p>Dispatch closest forces based on current dispatch level - See table below for number and type of resources to be dispatched.</p> <p><i>If report meets discretionary criteria call appropriate Duty Officer to determine response (Reference p.1)</i></p> <p>Suggested closest resources (these are only suggestions to help the dispatcher get started):</p> <ul style="list-style-type: none"> BLM Muskrat Fire Station BLM Water Tender Tooele County Fire Warden BLM Helicopter (Tooele) <p>If aircraft is dispatched: Consider/Initiate a TFR</p> <p>If fire is on state, county or private lands the use of additional aviation resources will be authorized by: State Wasatch Front Area Duty Officer and/or Fire Warden.</p> <p>Primary notifications:</p> <ul style="list-style-type: none"> BLM Duty Officer – ask about dozer on a Moderate State Wasatch Front Area Duty Officer Tooele County Dispatch (435) 882-5600 Tooele County Fire Warden <p>Other notifications (as warranted):</p> <ul style="list-style-type: none"> Clover Control (801) 777-4390 / 7575 / 7576 (if aircraft is dispatched) Dugway Proving Grounds -- Fire Dept (if adjacent to Dept of Defense ownership) Richfield Interagency Fire Center (435) 896-8404 (if near boundary)
-------------------	--

DISPATCH LEVEL	LOW	MODERATE	HIGH
RESOURCES (Minimum)	<ul style="list-style-type: none"> •1 Engine 	<ul style="list-style-type: none"> •1 Engine •ATGS 	<ul style="list-style-type: none"> •2 Engines • Dozer 1 Water Tender •1 Helicopter •ATGS •2 SEAT

Primary Initial Attack Frequencies				
Frequency Type	Frequency Name	Receive	Transmit	Tone
Command 1	BLM Deep Creek	170.5125	163.0250	167.9
Command 2	BLM Black Crook	173.6750	164.7750	110.9
Command 3	BLM Pilot Peak	170.5125	163.0250	146.2

ZONE 52
Tooele County (Ibapah)
FDRA: 478 (Desert)

Follow these procedures in the order listed

PROCEDURES	<p>Dispatch closest forces based on current dispatch level - See table below for number and type of resources to be dispatched.</p> <p><i>If report meets discretionary criteria call appropriate Duty Officer to determine response (Reference p.1)</i></p> <p>Suggested closest resources (these are only suggestions to help the dispatcher get started):</p> <ul style="list-style-type: none"> Ely BLM Elko BLM BLM Muskrat Fire Station BLM Water Tender Tooele County Fire Warden BLM Helicopter (Tooele) <p>If aircraft is dispatched: Consider/Initiate a TFR</p> <p>If fire is on state, county or private lands the use of additional aviation resources will be authorized by: State Wasatch Front Area Duty Officer and/or Fire Warden.</p> <p>Primary notifications:</p> <ul style="list-style-type: none"> BLM Duty Officer Ely Interagency Communications Center (775) 289-1925 State Wasatch Front Area Duty Officer Tooele County Dispatch (435) 882-5600 Tooele County Fire Warden Elko Interagency Dispatch Center (775) 748-4000 (ask to notify BIA FMO) <p>Other notifications (as warranted):</p> <ul style="list-style-type: none"> Clover Control (801) 777-4390 / 7575 / 7576 (if aircraft is dispatched) Richfield Interagency Fire Center (435) 896-8404 Contact BIA LEO
-------------------	---

DISPATCH LEVEL	LOW	MODERATE	HIGH
RESOURCES (Minimum)	<ul style="list-style-type: none"> •1 Engine 	<ul style="list-style-type: none"> •1 Engine •ATGS 	<ul style="list-style-type: none"> •2 Engines • Dozer 1 Water Tender •ATGS •1 Helicopter •2 SEAT

Primary Initial Attack Frequencies				
Frequency Type	Frequency Name	Receive	Transmit	Tone
Command 1	BLM Deep Creek	170.5125	163.0250	167.9
Command 2	BLM Black Crook	173.6750	164.7750	110.9
Command 3	BLM Pilot Peak	170.5125	163.0250	146.2
Ely BLM Simplex	Ely BLM	169.775	169.775	

ZONE 53

**Tooele County (Ferber Hills, North Ibapah, Elephant Knoll)
FDRA: 478 (Desert)**

Follow these procedures in the order listed

PROCEDURES	<p>Dispatch closest forces based on current dispatch level - See table below for number and type of resources to be dispatched.</p> <p><i>If report meets discretionary criteria call appropriate Duty Officer to determine response (Reference p.1)</i></p> <p>Suggested closest resources (these are only suggestions to help the dispatcher get started): Elko BLM Dispatch, (<i>first option as per initial attack agreement</i>) BLM Muskrat Fire Station BLM Water Tender Tooele County Fire Warden BLM Helicopter (Tooele)</p> <p>If aircraft is dispatched: Consider/Initiate a TFR</p> <p>If fire is on state, county or private lands the use of additional aviation resources will be authorized by: State Wasatch Front Area Duty Officer and/or Fire Warden.</p> <p>Primary notifications: BLM Duty Officer Tooele County Dispatch (435) 882-5600 Tooele County Fire Warden State Wasatch Front Area Duty Officer Elko Interagency Dispatch Center (775) 748-4000</p> <p>Other notifications (as warranted): Clover Control (801) 777-4390 / 7575 / 7576 (if aircraft is dispatched) Dugway Proving Grounds -- Fire Dept (if adjacent to Dept of Defense ownership) Ely Interagency Communications Center (775) 289-1925</p>
-------------------	--

DISPATCH LEVEL	LOW	MODERATE	HIGH
RESOURCES (Minimum)	<ul style="list-style-type: none"> •1 Engine 	<ul style="list-style-type: none"> •1 Engine • ATGS 	<ul style="list-style-type: none"> •2 Engines • Dozer 1Water Tender •1 Helicopter •ATGS •2 SEAT

Primary Initial Attack Frequencies				
Frequency Type	Frequency Name	Receive	Transmit	Tone
Command 1	BLM Black Crook	173.6750	164.775	110.9
Command 2	BLM Deep Creek	170.5125	163.0250	167.9

ZONE 54
Tooele County (Wendover, Silver Island Mts.)
FDRA: 478 (Desert)

Follow these procedures in the order listed

PROCEDURES	<p>Dispatch closest forces based on current dispatch level - See table below for number and type of resources to be dispatched.</p> <p><i>If report meets discretionary criteria call appropriate Duty Officer to determine response (Reference p.1)</i></p> <p>Suggested closest resources (these are only suggestions to help the dispatcher get started): Elko BLM Dispatch, (first option as per initial attack agreement) BLM Muskrat Fire Station BLM Water Tender Tooele County Fire Warden BLM Helicopter (Tooele)</p> <p>If aircraft is dispatched: Consider/Initiate a TFR</p> <p>If fire is on state, county or private lands the use of additional aviation resources will be authorized by: State Wasatch Front Area Duty Officer and/or Fire Warden.</p> <p>Primary notifications: BLM Duty Officer State Wasatch Front Area Duty Officer Elko Interagency Dispatch Center (775) 748-4000 Tooele County Fire Warden Tooele County Dispatch (435) 882-5600 Dugway Proving Grounds -- Fire Dept (if adjacent to Dept of Defense ownership)</p> <p>Other notifications (as warranted): Clover Control (801) 777-4390 / 7575 / 7576 (if aircraft is dispatched) Box Elder County Warden Bear River Area Duty Officer</p>
-------------------	---

DISPATCH LEVEL	LOW	MODERATE	HIGH
RESOURCES (Minimum)	<ul style="list-style-type: none"> • 1 Engine 	<ul style="list-style-type: none"> • 1 Engine • ATGS 	<ul style="list-style-type: none"> • 2 Engines • 1 Water Tender • Dozer • ATGS • 1 Helicopter • 2 SEAT

Primary Initial Attack Frequencies				
Frequency Type	Frequency Name	Receive	Transmit	Tone
Command 1	BLM Deep Creek	170.5125	163.025	167.9
Command 2	BLM Pilot Peak	170.5125	163.0250	146.2

ZONE 55

Tooele County (West of Clive Exit – I-80, Silver Island Mts.)
FDRA: 478 (Desert)

Follow these procedures in the order listed

PROCEDURES	<p>Dispatch closest forces based on current dispatch level - See table below for number and type of resources to be dispatched.</p> <p><i>If report meets discretionary criteria call appropriate Duty Officer to determine response (Reference p.1)</i></p> <p>Suggested closest resources (these are only suggestions to help the dispatcher get started):</p> <ul style="list-style-type: none"> BLM Muskrat Fire Station Tooele County Fire Warden FS Engine (Salt Lake) BLM Vernon Fire Station BLM Helicopter (Tooele) <p>If aircraft is dispatched: Consider/Initiate a TFR</p> <p>If fire is on state, county or private lands the use of additional aviation resources will be authorized by: State Wasatch Front Area Duty Officer and/or Fire Warden.</p> <p>Primary notifications:</p> <ul style="list-style-type: none"> BLM Duty Officer Tooele County Dispatch (435) 882-5600 Tooele County Warden State Wasatch Front Area Duty Officer <p>Other notifications (as warranted):</p> <ul style="list-style-type: none"> Clover Control (801) 777-4390 / 7575 / 7576 (if aircraft is dispatched) Lakeside Bombing Range Bear River Area Duty Officer Box Elder County Warden Dugway Proving Grounds -- Fire Dept
-------------------	--

DISPATCH LEVEL	LOW	MODERATE	HIGH
RESOURCES (Minimum)	<ul style="list-style-type: none"> • 1 Engine 	<ul style="list-style-type: none"> • 2 Engine • 1 Water Tender • 1 Dozer 	<ul style="list-style-type: none"> • 2 Engines • 1 Water Tender • 1 Dozer • ATGS

Primary Initial Attack Frequencies				
Frequency Type	Frequency Name	Receive	Transmit	Tone
Command 1	BLM Pilot Peak	170.5125	163.0250	146.2
Command 2	BLM Deep Creek	170.5125	163.0250	167.9
Command 3	BLM Dell	170.5125	163.0250	136.5

ZONE 56

**Tooele County (Lakeside Bombing Range – Dept of Defense Ownership)
FDRA: 478 (Desert)**

Follow these procedures in the order listed

PROCEDURES	<p>NO CIVILIAN ADMITTANCE</p> <p><i>If report meets discretionary criteria call appropriate Duty Officer to determine response (Reference p.1)</i></p> <p>Contact Lakeside Bombing Range to determine if fire report may be the result of ordinance or firing activity. If confirmed as a wildfire on DOD land, obtain size-up information for primary notifications.</p> <p>No resources will be dispatched to this area except as requested by Lakeside Bombing Range AND approved by the Agency Duty Officer.</p> <p>Any non-military resources responding must be escorted by an Air Force representative.</p> <p>Primary notifications: BLM Duty Officer Clover Control (801) 777-4390 / 7575 / 7576 State Wasatch Front Area Duty Officer State Bear River Area Duty Officer Tooele County Dispatch (435) 882-5600 Tooele County Fire Warden Box Elder County Dispatch (435) 732-6890 Box Elder County Warden Lakeside Bombing Range Duty Officer</p>
-------------------	--

DISPATCH LEVEL	LOW	MODERATE	HIGH
RESOURCES (Minimum)	<p>*The BLM & State Duty Officer will determine appropriate default initial response (if needed).</p>		

Primary Initial Attack Frequencies				
Frequency Type	Frequency Name	Receive	Transmit	Tone
Command 1	BLM Delle	170.5125	163.0250	136.5

ZONE 57

**Box Elder County (Goose Creek Mts., Grouse Creek Mts., Lucin, Hogup Mts.,
Newfoundland Mts., Matlin Mts., Baker Hills)
FDRA: 478 (Desert)**

Follow these procedures in the order listed

PROCEDURES	<p>Dispatch closest forces based on current dispatch level - See table below for number and type of resources to be dispatched.</p> <p><i>If report meets discretionary criteria call appropriate Duty Officer to determine response (Reference p.1)</i></p> <p>All attempts will be made to assign a Resource Advisor (READ) on BLM/Federal ownership due to critical Sage Grouse area (FIAT).</p> <p>Suggested closest resources (these are only suggestions to help the dispatcher get started):</p> <ul style="list-style-type: none"> BLM Water Tender Box Elder County Fire Warden (dispatched through Box Elder County Dispatch) BLM Muskrat Fire Station South Central Idaho Dispatch if within 10 miles of ID state line. FS Sawtooth Engine (Burley) Box Elder Dozer/Grader (if on state or private ownership) BLM Helicopter (Tooele) <p>If aircraft is dispatched:</p> <ul style="list-style-type: none"> Consider/Initiate a TFR <p>**If report is in the <u>North</u> end of this zone, the BLM Duty Officer will determine if BLM aircraft are dispatched, in consultation with State Duty Officer if private or state land involved.</p> <p>**Prompt IC to order Dozer/Dozer Boss, if dozer is ordered</p> <p>Primary notifications:</p> <ul style="list-style-type: none"> BLM Duty Officer Box Elder County Dispatch (435) 734-3800 Box Elder County Fire Warden State Bear River Area Duty Officer South Central Idaho Interagency Fire Center (208) 886-2373 (if near boundary) <p>Other notifications (as warranted):</p> <ul style="list-style-type: none"> Clover Control (801) 777-4390 / 7575 / 7576 (if aircraft is dispatched) Salt Creek/Locomotive Springs Waterfowl Management Area, Randy Berger (435) 452-8503 Notify South Central Idaho Dispatch if adjacent to Sawtooth NF ownership (208) 886-2373
-------------------	---

DISPATCH LEVEL	LOW	MODERATE	HIGH
RESOURCES (Minimum)	<ul style="list-style-type: none"> • 1 Engine 	<ul style="list-style-type: none"> • 3 Engines • 1 Water Tender • ATGS • 1 Dozer 	<ul style="list-style-type: none"> • 4 Engines • 1 Water Tender • 1 Dozer • 1 Helicopter • ATGS • 2 SEAT

Primary Initial Attack Frequencies				
Frequency Type	Frequency Name	Receive	Transmit	Tone
**If near the Idaho border, consider using TAC 2 or 3 to assist with frequency management.				
Command 1	BLM Hansel	170.5125	163.0250	123.0
Command 2	BLM Pilot Peak	170.5125	163.0250	100.0
Command 3	BLM Lynn	170.5125	163.0250	103.5

ZONE 58
Box Elder County (Pilot Range)
FDRA: 478 (Desert)

Follow these procedures in the order listed

PROCEDURES	<p>Dispatch closest forces based on current dispatch level - See table below for number and type of resources to be dispatched.</p> <p><i>If report meets discretionary criteria call appropriate Duty Officer to determine response (Reference p.1)</i></p> <p>All attempts will be made to assign a Resource Advisor (READ) on BLM/Federal ownership. Due to critical Sage Grouse area (FIAT)</p> <p>Resource advisor approval is required prior to using local dip sites. Contact Chad Millinson (FWS, Reno), Wildlife Biologist W# (775) 861-6327, C# (775) 342-3765, H# (775) 323-0838, or Receptionist at (775) 861-6300</p> <p>Suggested closest resources (these are only suggestions to help the dispatcher get started): BLM Muskrat Fire Station BLM Water Tender Elko BLM Box Elder Dozer/Grader (if state or private ownership) BLM Helicopter (Tooele)</p> <p>If aircraft is dispatched: Consider/Initiate a TFR</p> <p>Primary notifications: BLM Duty Officer Box Elder County Dispatch (435) 732-6890 Box Elder County Fire Warden State Bear River Area Duty Officer Clover Control (801) 777-4390 / 7575 / 7576 (if aircraft is dispatched) Elko Interagency Dispatch Center (775) 748-4000</p> <p>*Note: DWR has requested we take aggressive suppression action in the Bettridge Creek Drainage. (This is an area of critical environmental concern for the BLM and Critical Fish Habitat for DWR; reference the dispatch map for the exact boundaries.) <u>NO RETARDANT use is allowed within 600 ft of drainage bottoms</u> <u>and NO DOZERS should be used in the Bettridge Area.</u></p>
-------------------	---

DISPATCH LEVEL	LOW	MODERATE	HIGH
RESOURCES (Minimum)	<ul style="list-style-type: none"> • 2 Engines • Water Tender 	<ul style="list-style-type: none"> • 3 Engines • 1 Water Tender • 1 Helicopter • ATGS • 1 Dozer 	<ul style="list-style-type: none"> • 4 Engines • 1 Water Tender • 1 Dozer • 1 Helicopter • ATGS • 2 SEAT

Primary Initial Attack Frequencies				
Frequency Type	Frequency Name	Receive	Transmit	Tone
Command 1	BLM Pilot Peak	170.5125	163.025	100.0
Command 2	BLM Hansel	170.5125	163.025	123.0
Command 3	BLM Lynn	170.5125	163.0250	103.5

ZONE 59
Box Elder County (Lynn, Yost)
FDRA: 478 (Desert)

Follow these procedures in the order listed

PROCEDURES	<p>Dispatch closest forces based on current dispatch level - See table below for number and type of resources to be dispatched.</p> <p><i>If report meets discretionary criteria call appropriate Duty Officer to determine response (Reference p.1)</i></p> <p>All attempts will be made to assign a Resource Advisor (READ) on BLM/Federal ownership. Due to critical Sage Grouse area (FIAT)</p> <p>Suggested closest resources (these are only suggestions to help the dispatcher get started):</p> <ul style="list-style-type: none"> South Central Idaho BLM FS Sawtooth Engine (Burley) Box Elder County Fire Warden (dispatched through Box Elder County Dispatch) FWS Engine (Brigham City) FS Engine (Logan, South Weber, Salt Lake) BLM Muskrat Fire Station BLM Water Tender Box Elder Dozer/grader if on State of Utah or private ownership BLM Helicopter (Tooele) <p>If aircraft is dispatched:</p> <ul style="list-style-type: none"> Consider/Initiate a TFR **If report is in the <u>North</u> end of this zone, the BLM Duty Officer will determine if aircraft are dispatched, in consultation with State Duty Officer if Private or State land is involved *If fire is on state, county or private lands use of aviation resources will be authorized by: State Bear River Area Duty Officer and/or Fire Warden. <p>Primary notifications:</p> <ul style="list-style-type: none"> BLM Duty Officer South Central Idaho Dispatch (208) 886-2373 Box Elder County Dispatch (435) 732-6890 Box Elder County Warden State Bear River Area Duty Officer Clover Control (801) 777-4390 / 7575 / 7576 (if aircraft is dispatched) Elko Interagency Dispatch Center (775) 748-4000 <p>Other notifications (as warranted):</p> <ul style="list-style-type: none"> Notify South Central Idaho Dispatch if adjacent to Sawtooth NF ownership (208) 886-2373
-------------------	--

DISPATCH LEVEL	LOW	MODERATE	HIGH
RESOURCES (Minimum)	<ul style="list-style-type: none"> • 1 Engines 	<ul style="list-style-type: none"> • 3 Engines • 1 Water Tender • 1 Helicopter • ATGS • 1 Dozer 	<ul style="list-style-type: none"> • 4 Engines • 1 Water Tender • 1 Dozer • 1 Helicopter • ATGS • 2 SEAT

Primary Initial Attack Frequencies				
Frequency Type	Frequency Name	Receive	Transmit	Tone
Command 1	BLM Lynn	170.5125	163.0250	103.5
Command 2	BLM Hansel	170.5125	163.0250	123.0
Command 3	BLM Pilot	170.5125	163.0250	100.0

ZONE 60

**Box Elder County (Raft River Mountains, Sawtooth National Forest)
FDRA: 478 (Desert)**

Follow these procedures in the order listed

PROCEDURES	<p>Dispatch closest forces based on current dispatch level - See table below for number and type of resources to be dispatched.</p> <p><i>If report meets discretionary criteria call appropriate Duty Officer to determine response (Reference p.1)</i></p> <p>Suggested closest resources (these are only suggestions to help the dispatcher get started): FS Sawtooth Engine (Burley) Box Elder County Fire Warden (dispatched through Box Elder County Dispatch) FS Engine (Logan) FS Engine (South Weber) FWS Engine (Brigham City) BLM Muskrat Fire Station South Central Idaho District BLM</p> <p>If aircraft is dispatched: Consider/Initiate a TFR</p> <p>*If fire is on state, county or private lands use of aviation resources will be authorized by: State Bear River Area Duty Officer and/or Fire Warden.</p> <p>Primary notifications: State Bear River Area Duty Officer South Central Idaho Dispatch (208) 886-2373 BLM Duty Officer Box Elder County Warden Box Elder County Dispatch (435) 732-6890</p> <p>If fire is not lightning caused, order an INVF (Coordinate with South Central Idaho Dispatch)</p> <p>Other notifications (as warranted): Clover Control (801) 777-4390 / 7575 / 7576 (if aircraft is dispatched) <i>(Prompt IC for portable repeater)</i></p>
-------------------	--

DISPATCH LEVEL	LOW	MODERATE	HIGH
RESOURCES (Minimum)	• 1 Engine	• 2 Engine • 1 Water Tender • ATGS	• 4 Engines • 1 Water Tender • ATGS

Primary Initial Attack Frequencies				
Frequency Type	Frequency Name	Receive	Transmit	Tone
Command 1	BLM Lynn	170.5125	163.0250	103.5
Command 2	BLM Hansel	170.5125	163.0250	123.0